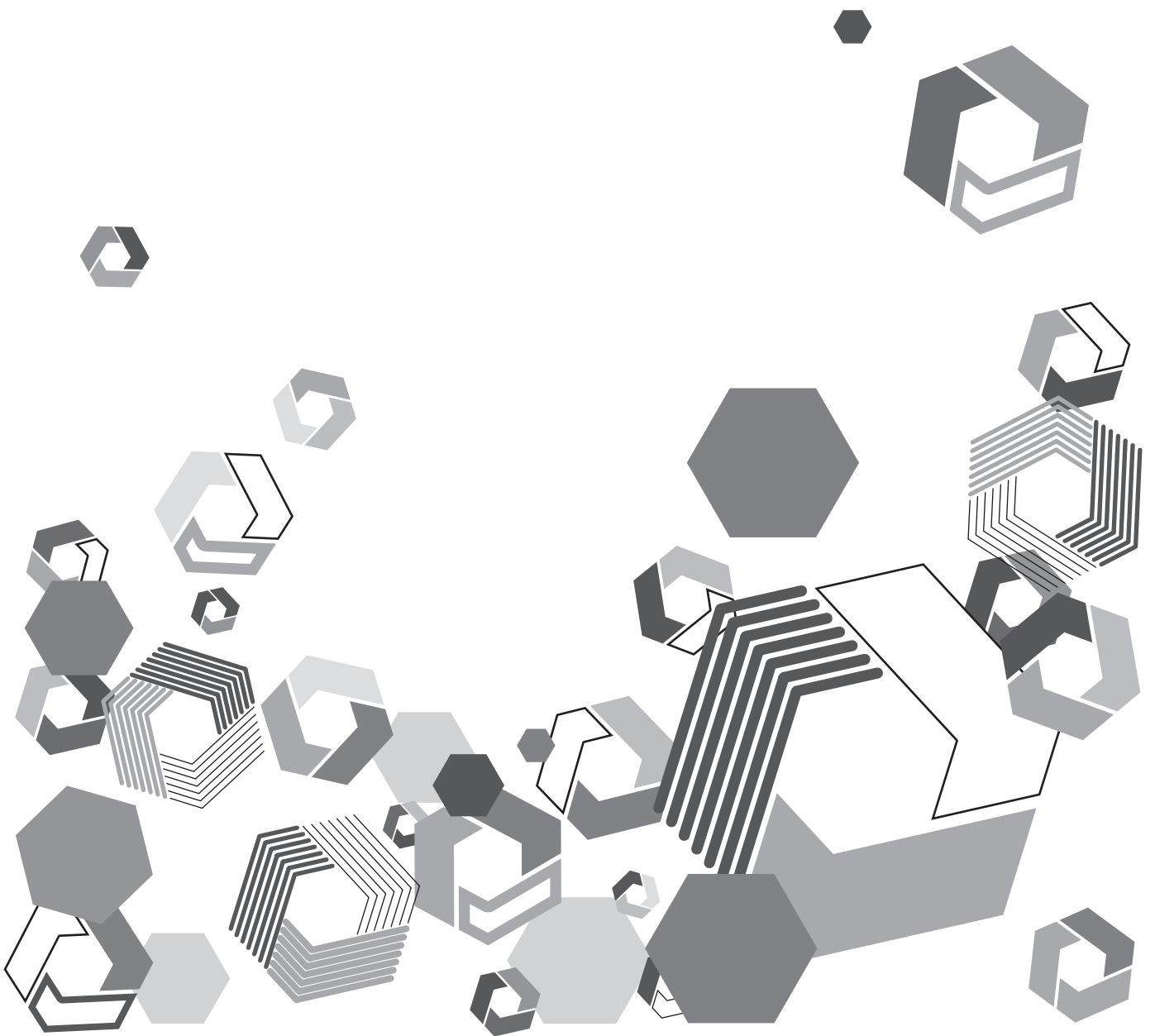


Panasonic

User Guide

Kairos Core Manager



Change History

Date	Description
Feb 29.2024	Kairos firmware version V1.6.2 supported. Kairos Core Manager version V1.6.2

Trademarks and registered trademarks

- Microsoft® and Windows® are registered trademarks or trademarks of Microsoft Corporation in the United States and/or other countries.
- Other model names, company names, and product names listed in these operating instructions are trademarks or registered trademarks of their respective companies.

Copyright and license

Excluding the open source software, transferring, copying, reverse assembling, reverse compiling, and reverse engineering of the software included in this product is prohibited. Also, exporting of any software included in this product against the export laws and regulations is prohibited.

How to read this document

■ Illustrations and screen displays featured in this document

- This document's illustrations and screen displays may differ from how they actually appear.

■ Reference pages

- Reference pages in this document are indicated by (page 00).

■ Terminology

- The computer ("PC") on which Kairos Core Manager is installed is referred to as "Kairos Core Manager PC".
- Kairos Creator (GUI software), Kairos Control (control panel), and Kairos Touch Control are referred to as "Creator", "Control", and "Touch Control", respectively.
- Kairos Creator, Kairos Control, and Kairos Touch Control are referred collectively as "Device".
- < > brackets are used for notation in this document. This indicates that the content surrounded by < > brackets is actually displayed, or the content surrounded by < > brackets must be specified as either a value or character string.

■ Conventions used in this document

- Words and phrases in [] brackets indicate content displayed in the PC screen.

Network security

As the KAIROS system intended to be used while connected to a network, the following security risks exist.

- 1) Leakage or theft of information through the system
- 2) Unauthorized operation of the system by persons with malicious intent
- 3) Interference with or stoppage of the system by persons with malicious intent

It is your responsibility to take precautions such as those described below, to protect yourself against the above network security risks. Panasonic does not accept any responsibility for damage of this type.

- Use the system in a network secured by a firewall, etc.
- Make sure that the system is not infected by computer viruses or other malicious programs (using a regularly updated antivirus program, anti-spyware program, etc.).
- Protect your network against unauthorized access by restricting users to those who log in with an authorized user name and password.
- After accessing the system as an administrator, be sure to close all web browsers.
- Change the administrator password periodically.
- To avoid passwords that can be guessed easily by third parties, set a password of at least 8 characters in length, including at least 3 different types of characters, such as upper case, lower case, numbers, and symbols.
- Restrict access to the system by authenticating the users, for example, to prevent setting information stored on the system from leaking over the network.
- Do not install the system in locations where the system, cables, and other parts can be easily damaged or destroyed by persons with malicious intent.
- Avoid connections that use public lines.
- The staff of our company and our affiliated companies will never ask for the password directly from the customer.

Note:

Notes on user authentication

- The system provides the following types of user authentication: no authentication, basic authentication, and digest authentication.
If basic authentication is used without the use of a dedicated authentication device, password leaks may occur.

Usage restrictions

- We recommend connecting the system, controller, and any computes to the same network segment.
Events based on settings inherent to the network devices, for example, may occur in connections that include different segments, so be sure to perform checks prior to operation.

Contents

Network security	4
Chapter 1 Overview	6
Kairos Core Manager	7
Introduction	7
Main functions	7
Operation environment	7
Installing the license	7
Chapter 2 Setup	8
Starting/exiting Kairos Core Manager	9
Starting Kairos Core Manager	9
Running Kairos Core Manager in the background	9
Exiting Kairos Core Manager	10
Screen configuration	11
Main screen	11
Workspace list	12
Creating a Workspace	13
What is a Workspace?	13
Creating a Workspace (main)	13
Creating a Workspace (backup)	19
Editing a Workspace	25
Renaming a Workspace, main frame, or device	25
Changing the display order of the Workspace, main frame, or device tree	25
Deleting a Workspace, main frame, or device	25
Changing Workspace, main frame, or device settings	25
Copying a Workspace	25
Using a Configuration file	26
What is a Configuration file?	26
Creating a Configuration file	26
Exporting a Configuration file	26
Importing a Configuration file	26
Updating software	27
Updating Kairos Core Manager	27
Updating main frame firmware	27
Other operations	28
Displaying help	28
Displaying the message list	28
Saving the operation log	29
Checking the software version	29
Other operation settings	30
Chapter 3 Operation	31
Managing media files	32
Media files	32
Exporting media files	32
Importing media files	33
Mirroring media files	33
Relocating production environments	35
Relocating a Workspace	35
Manually relocating multiple devices	36
Manually relocating a single device	36
Managing Production/Environment files	37
Saving a Production file	37
Loading a Production file	37
Saving an Environment file	37
Loading an Environment file	37
Chapter 4 Web interface	38
Preliminary settings	39
Web settings	39
Relocating production environments	40
Chapter 5 Command line interface	41
Preliminary settings	42
REST API settings	42
Relocating production environments	43
Chapter 6 Appendix	44
Message list	45

Chapter 1 **Overview**

Before using the software, read this chapter.

Kairos Core Manager

Introduction

Kairos Core Manager application software runs on a Windows PC.

Running this software on a PC connected to Kairos Core (main frame), Kairos Control (control panel), and Kairos Creator/Touch Control (GUI software) allows you relocate to a production environment prepared for backup purposes, and to manage media files saved on the main frame.

Main functions

■ Relocating production environments

The production environment being used as main can be relocated to a production environment containing a backup main frame.

■ Managing media files

Media files on the main frame can be synchronized to the specified folder, or synchronized from the specified folder to media files on the main frame.

Media files on a main frame can also be backed up to the specified folder, or restored from backup to a main frame.

■ Managing Production/Environment files

Production/Environment files used by the main frame can be saved to the specified folder, or loaded to a main frame.

Operation environment

Operation is confirmed in following environments, but this does not guarantee the operation on all devices.

■ Windows PC

- OS: Windows 11, Windows 10

Installing the license

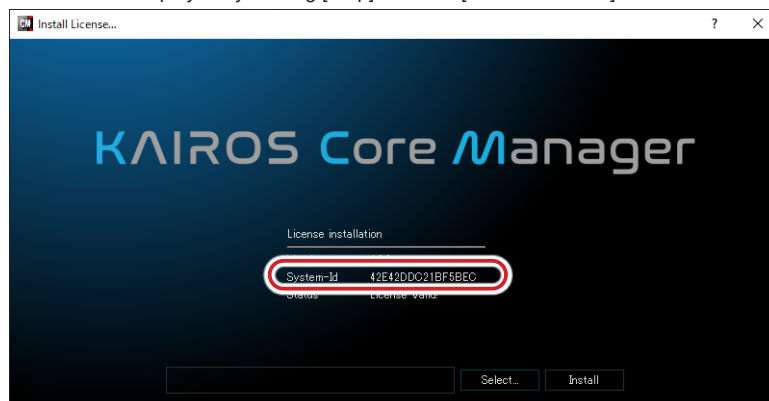
A license must be installed to use certain functions of Kairos Core Manager.

Kairos Core Manager requires the following license:

- AT-SFCM10 (software key for Kairos Core Manager)

NOTE

- The "System-Id" is required to create a valid license key.
The "System-Id" can be found on the screen displayed by clicking [Help] menu → [Install License...].



For information on installing a license, refer to the following website.

https://panasonic.biz/sav/kairos_e/

Chapter 2 **Setup**

This chapter describes how to start Kairos Core Manager, as well as operations such as configuring preliminary settings.

Starting/exiting Kairos Core Manager

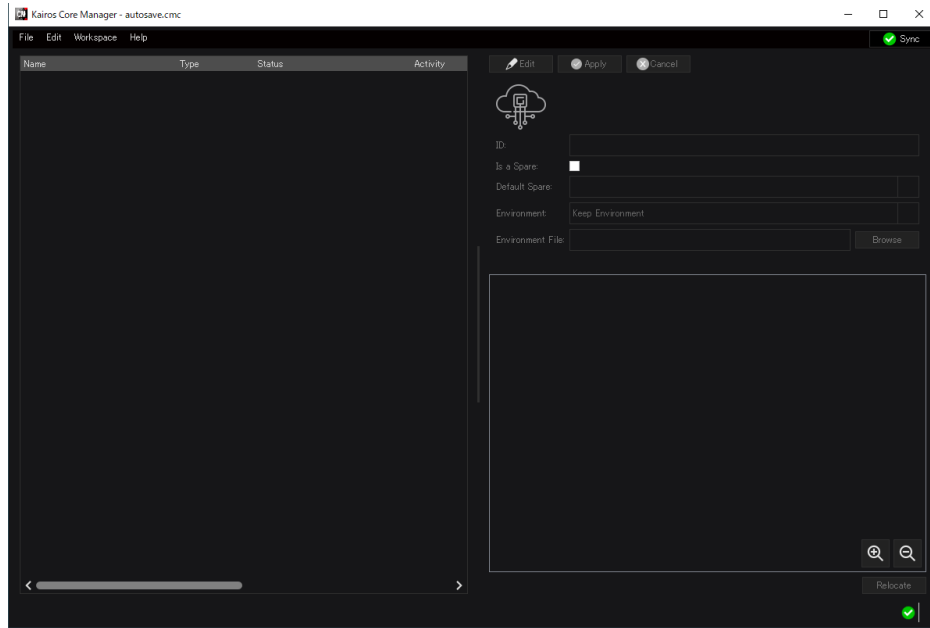
Starting Kairos Core Manager

Start Kairos Core Manager.

- 1 Double-click the KairosCoreManager icon on the desktop.



- Kairos Core Manager starts.



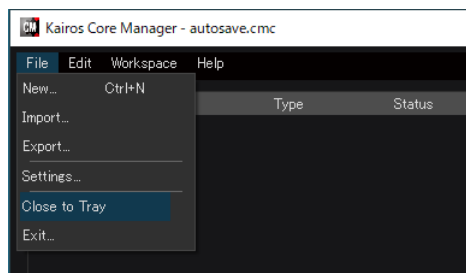
NOTE

- After the software has been started once, the previous Workspace configuration will be displayed on the screen each time the software is started. (This is true only when the [Auto Load] checkbox has been selected in the [General] tab of [File] menu → [Settings...].)
- If Step 1 is performed while Kairos Core Manager is minimized to the notification area (page 9), an error message will be displayed. (Two instances of the software cannot be run at the same time.)

Running Kairos Core Manager in the background

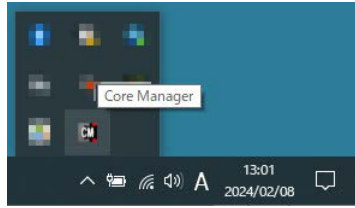
A running instance of Kairos Core Manager can be minimized to the notification area to run in the background.

- 1 Click [File] menu → [Close to Tray].



2 Once the confirmation message is displayed, click [OK].

- Kairos Core Manager is minimized to the notification area.



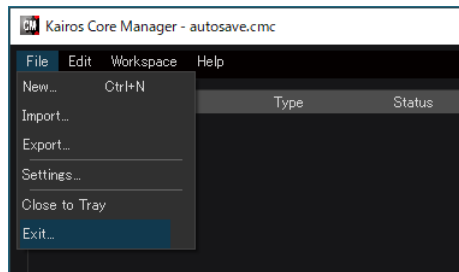
NOTE

- Once minimized to the notification area, Kairos Core Manager can be restored through any of the following actions.
 - Click the Kairos Core Manager icon in the notification area.
 - Right click the Kairos Core Manager icon in the notification area, and then click [Restore].
- If the [Close Program to Tray] checkbox is selected in the [General] tab of [File] menu → [Settings...], clicking [X] in the upper right corner will minimize Kairos Core Manager to the notification area. (page 30)

Exiting Kairos Core Manager

Exit Kairos Core Manager.

1 Click [File] menu → [Exit...].



2 Once the confirmation message is displayed, click [OK].

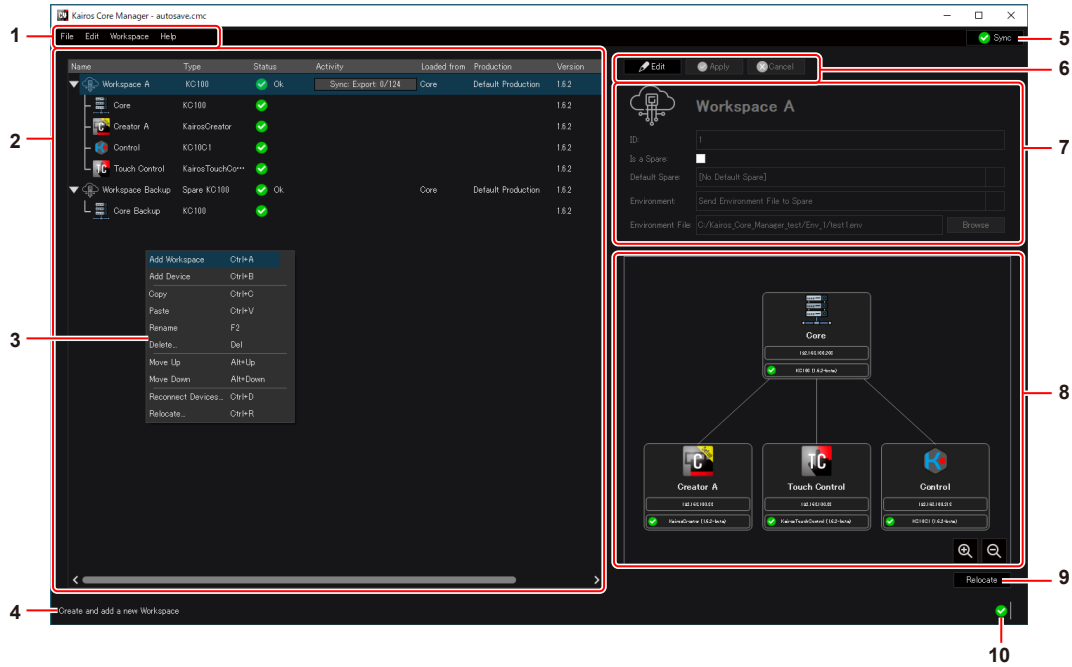
NOTE

- If Kairos Core Manager has been minimized to the notification area (page 9), right click the Kairos Core Manager icon in the notification area, and then click [Exit].

Screen configuration

Main screen


This section describes the configuration of the main screen of Kairos Core Manager.



1 Menu

The menu is structured in categorized levels according to intended use. Items in the lower level are displayed by clicking on the menu.

2 Workspace list

Workspaces that have already been created are displayed in a tree format. Double-click a Workspace or click  to display/hide an item in the tree. Details such as the item name, connection status, and Kairos version are displayed. For details, refer to “Workspace list” (page 12).

3 Right-click menu



Right click an item (Workspace, main frame, or device) in the Workspace list to display a menu.

4 Menu description

A description of the menu or right-click menu currently under the cursor is displayed.

5 [Sync]

Click to stop or restart the synchronization process for all media files in the Workspace list.

-  Sync: Synchronization process is allowed. Click to stop the synchronization process.
-  Sync: Synchronization process is prohibited. Click to restart the synchronization process.

6 Operation buttons

These buttons are used to perform various operations on items (Workspace, main frame, and device) selected from the Workspace list.

- [Edit]: Switches the settings area to edit mode, allowing the settings for the selected item.
- [Apply]: Applies any edits made in the settings area, and exits from edit mode.
- [Cancel]: Discards any edits made in the settings area, and exits from edit mode.

7 Settings area

This area is used to configure various settings for items (Workspace, main frame, and device) selected from the Workspace list.

8 Configuration diagram for selected Workspace

When a Workspace is selected from the Workspace list, a configuration diagram showing the network connections between the main frame and devices in the Workspace is displayed.




Click  or  on the lower right to expand or reduce the configuration diagram.

9 [Relocate]

Relocates the selected Workspace to another Workspace set in advance.

10 Status display icon

An icon indicating the current status of the Workspace list is displayed.

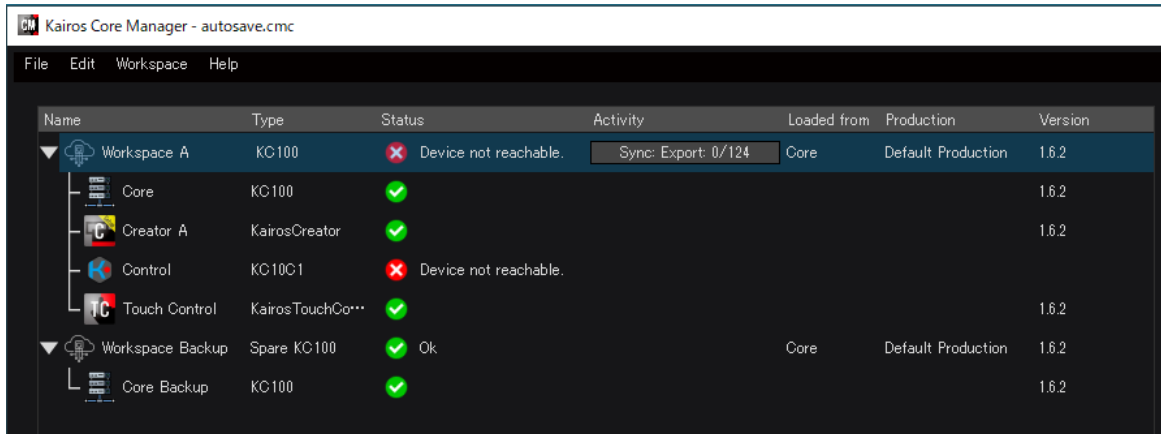
-  (OK) is displayed if all Workspaces are operating normally.
-  (Error) or  (Warning) is displayed if an error has occurred.

Click the icon to display the error message list. (page 45)

Workspace list

This section describes the items in the header of the Workspace list.

Drag the scroll bar at the bottom of the Workspace list to view all the items in the header. The border between the Workspace list and settings area can also be dragged and dropped to increase the horizontal width of the Workspace list.



Item	Description of settings
[Name]	Displays the name of the Workspace, main frame, or device.
[Type]	Displays the product name of the Workspace, main frame, or device.
[Status]	Displays the status or any messages for the Workspace, main frame, or device. ✔ (OK): Operating normally. ✖ (Error): An error has occurred. ⚠ (Warning): A minor error has occurred. ⓘ (Info): A notification. For more information of messages, refer to "Message list" (page 45).
[Activity]	Data transfer progress is displayed in the form of a progress bar with the "Number of transferred files / Total number of files to transfer" overlaid on top.
[Loaded from] / [Production]	Displays the latest information about where a Production file is being loaded for each Workspace, as well as the file name. Any of the following will be displayed under [Loaded from] / [Production]. • [Creator:] <IP address> / <Name of file imported from Creator> • [CoreManager] / <Name of file imported from Kairos Core Manager> • [Core] / [Default Production] (when the main frame is started with a Default Production file set) • [Core] / [No new production loaded since Core Startup] (when the main frame is started without a Default Production file set)
[Version]	Displays the software version of the Workspace, main frame, or device.

Creating a Workspace

What is a Workspace?

Workspace configurations managed from Kairos Core Manager through a network are created to suit the production environment. A Workspace is defined as a set of a single main frame and the devices forming a Kairos system. Each Workspace is configured by adding Creator, Control, or Touch Control to a single main frame.

Creating a Workspace (main)

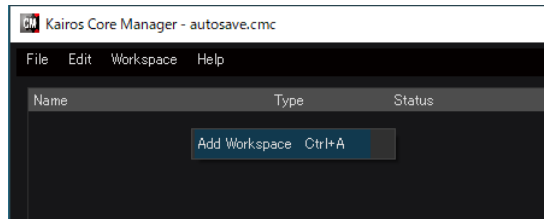
Workspace configurations managed from Kairos Core Manager through a network are created to suit the production environment. This section describes the procedure for creating and setting a main Workspace, main frame, and device.

STEP 1: Creating a Workspace (main)

First, create a new Workspace (main), and then configure settings such as transferring an Environment file when relocating to a Workspace (backup).

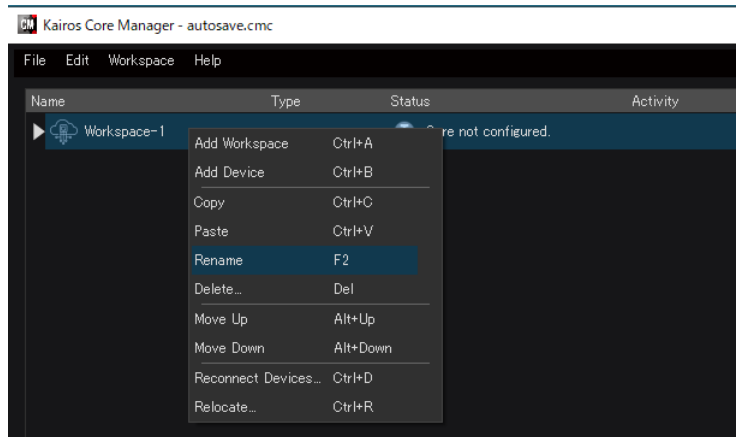
1 Right click an empty area of the Workspace list, and then click [Add Workspace].

- To create further Workspaces, right click a Workspace, and then click [Add Workspace].

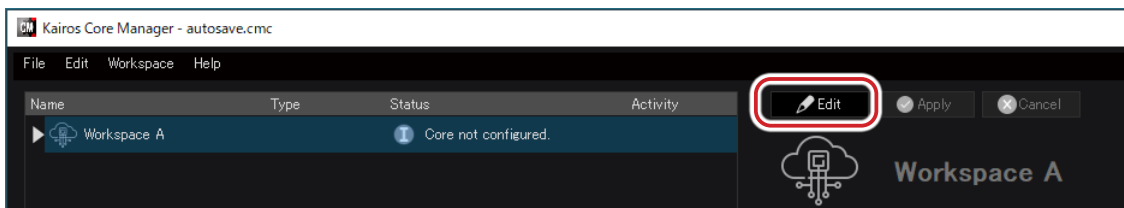


- The new Workspace is created in the Workspace list. The next step is to set this Workspace as the main Workspace.

2 Right click the new Workspace, select [Rename], enter the name of the Workspace, and then click [OK].

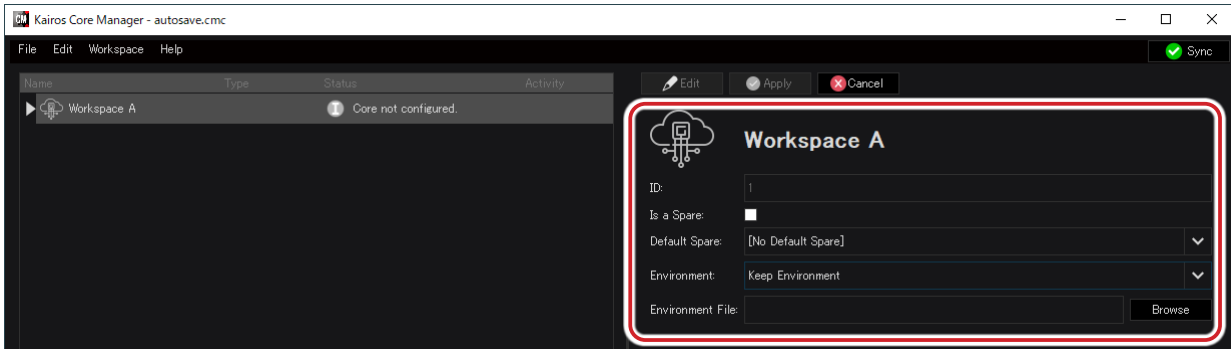


3 Ensure that the new Workspace is selected, and then click [Edit].



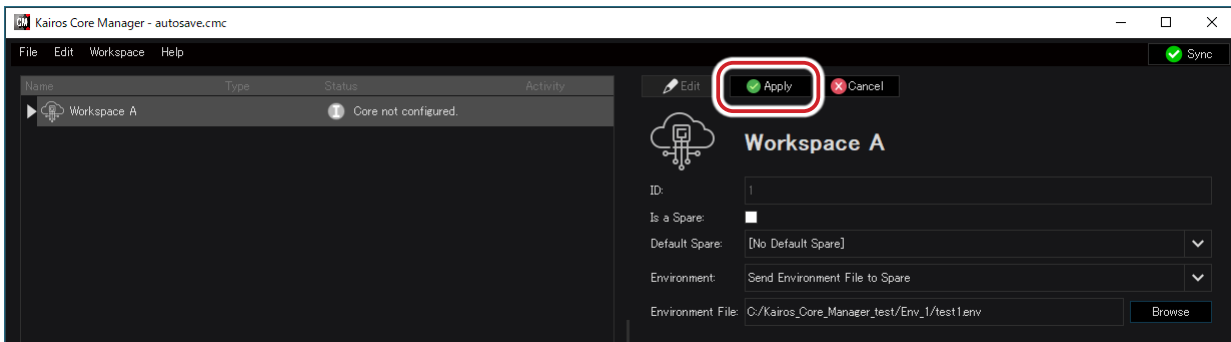
- The settings area switches to Workspace edit mode.

4 Set each item in the settings area.



Item	Description of settings
[ID:]	A unique number will be automatically assigned.
[Is a Spare:]	Select the checkbox here if the new Workspace is to be used for backup. * Clear the checkbox for a Workspace (main).
[Default spare:]	Select the Workspace to use as the backup destination, when [default] is selected during Workspace relocation operation (page 35). A Workspace (backup) must be created in advance, in order to configure this setting. (page 19)
[Environment:]	Select from where to transfer the Environment file (input/output settings) when relocating the Workspace. <ul style="list-style-type: none"> • [Keep Environment]: Does not transfer the Environment file. • [Send Environment to Spare]: Transfers the Environment file from the main frame (main) to the main frame (backup). • [Send Environment File to Spare]: Transfers the Environment file specified in [Environment File:] to the main frame (backup).
[Environment File:]	If [Send Environment File to Spare] was selected for [Environment:], click [Browse] to specify the Environment file to transfer to the main frame (backup).

5 Click [Apply].



- Clicking [Cancel] will exit edit mode without changing any settings.

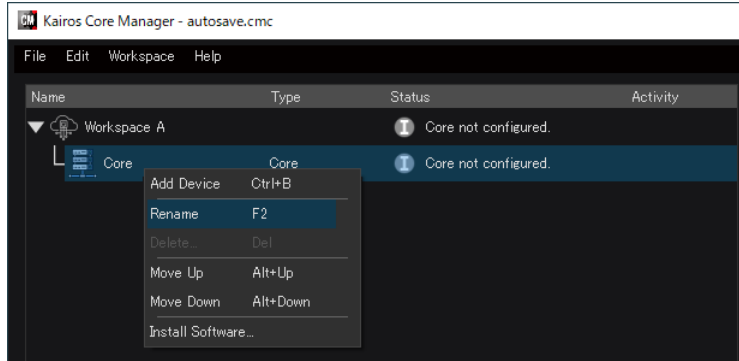
NOTE

- Instead of Step 1, you can also click [Edit] menu → [Add Workspace].
- Instead of Step 2, you can also select the new Workspace, and then click [Edit] menu → [Rename].
- Instead of Step 3, you can also select the new Workspace, and then click [Edit] menu → [Edit].
- Following is some additional information on the [Environment:] setting in Step 4:
 - [Send Environment to Spare]: Suitable when a single Workspace (backup) is configured for multiple Workspaces (main). This setting copies the Environment file, so the same Environment file will be applied on both the Workspace (main) and Workspace (backup) after Workspace relocation. This setting could cause confusion if there are multiple main frames with the same Environment file. The [After Reloc Env] setting can be used to prevent this from happening. (page 16)
 - [Send Environment File to Spare]: Suitable when a single Workspace (backup) is configured for multiple Workspaces (main).

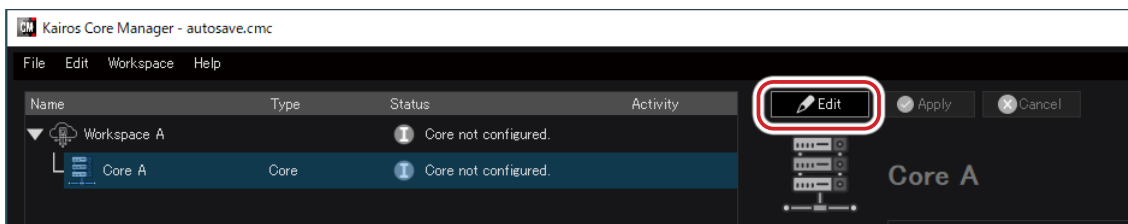
STEP 2: Setting the main frame

Register the main frame to the Workspace (main).

- 1 Open the tree of the Workspace created in STEP 1.
- 2 Right click the main frame, select [Rename], enter the name of the main frame, and then click [OK].

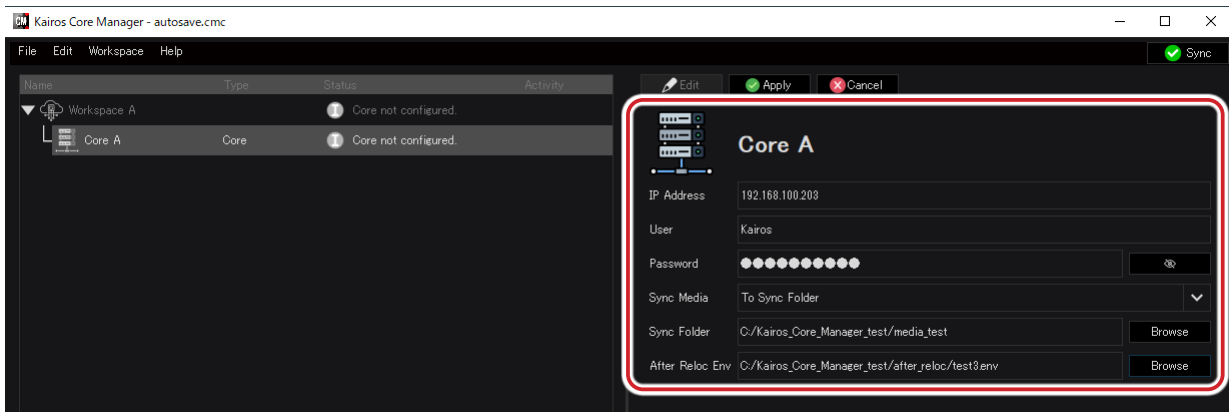



- 3 Ensure that the main frame is selected, and then click [Edit].



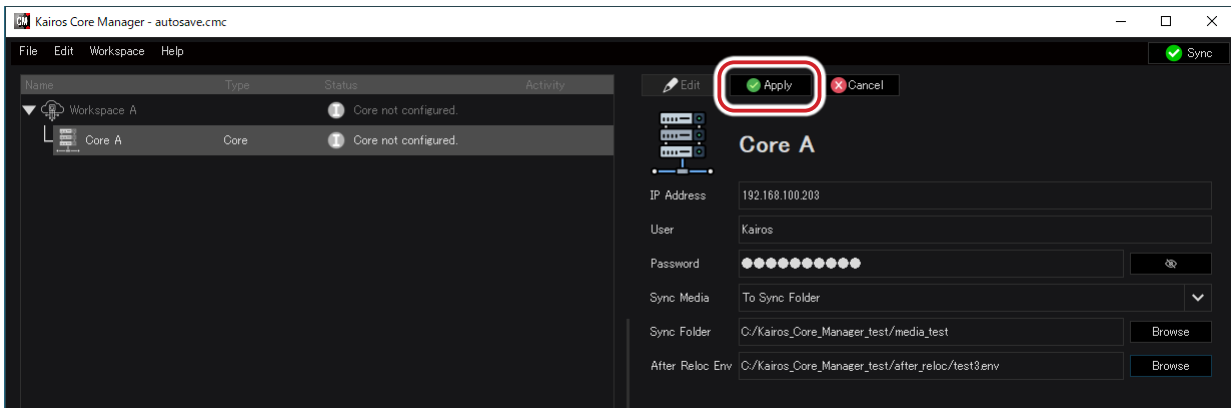
- The settings area switches to main frame edit mode.


- 4 Set each item in the settings area.



Item	Description of settings
[IP Address]	Enter the IP address of the main frame based on your network environment.
[User]	"Kairos" has already been entered. Do not change this.
[Password]	Enter the File Transfer Password set in Kairos. For details, refer to the KAIROS Operating Guide. Click  to display the character string of the password.
[Sync Media]	<p>Click the list button, and then set the synchronization method for media files. The operation set here will always be used while Kairos Core Manager is running.</p> <ul style="list-style-type: none"> • [[no sync]: Does not synchronize. • [To Sync Folder]: Copies media files from the main frame to the folder (referred to as "Sync Folder" below) specified in [Sync Folder]. • [From Sync Folder]: Copies media files from the Sync Folder to the main frame. • [Mirror from Sync Folder]: Synchronizes media files in one direction, from the Sync Folder to the main frame. (If a media file is added or deleted in the Sync Folder, the change will also be applied to the media file in the main frame. However, if a media file is changed on the main frame, the change will not be applied to the Sync Folder.) <p>Note that, if a media file that was imported only to the main frame through Creator does not exist in the Sync Folder of the synchronization destination, the file will be deleted from the main frame when the synchronization process is run.</p> <ul style="list-style-type: none"> • [Mirror from and to Sync Folder]: Synchronizes media files in both directions, from the Sync Folder to the main frame and from the main frame to the Sync Folder. (If a media file is added or deleted in the Sync Folder, the change will also be applied to the media file in the main frame. If a media file is changed on the main frame, the change will also be applied to the Sync Folder.) <p>* For the main frame (main), it is recommended to select [To Sync Folder] or [Mirror from and to Sync Folder].</p> <p>* If any option other than [[no sync]] is selected, duplicate files will be skipped (not overwritten) when transferring media files.</p> <p>* For information on the [Sync Media] setting of the backup main frame, refer to Step 4 in "STEP 2: Setting the main frame" (page 15).</p>
[Sync Folder]	Click [Browse], and then specify the synchronization folder (Sync Folder) for media files.
[After Reloc Env]	Click [Browse], and then specify the Environment file to load to this main frame after Workspace relocation. Usage example) The system has been relocated to the Workspace (backup) due to an error occurring on the Workspace (main). All triggers connected to the input of the main frame in which the error has occurred will continue to apply, even after relocating. This could cause unexpected controls to be sent, such as Tally notifications from the Workspace in which the error occurred. In order to prevent this from occurring, use this setting to specify a file with no impact on the production environment of the Workspace after relocation (such as an Environment file where all settings in [Input Setting]/[Output Setting] have been set to [disable]). (page 14)

5 Click [Apply].



- If the connection to the main frame is successful,  will be displayed in the [Status] column for the Workspace and main frame.
- After clicking [Apply], synchronization will begin once the [Sync media] start conditions are met.
- Clicking [Cancel] will exit edit mode without changing any settings.

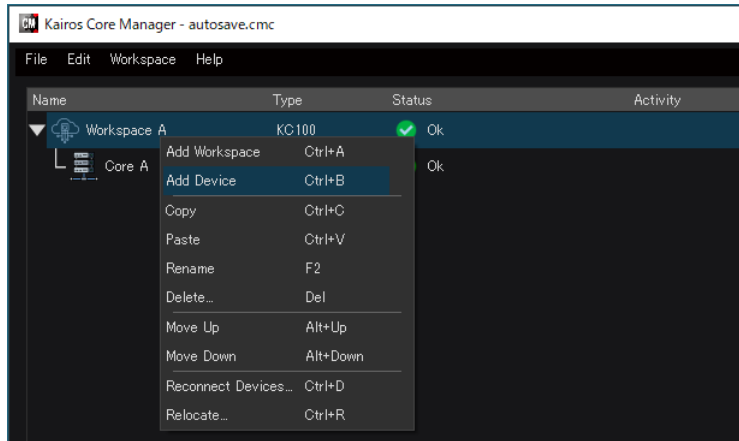
NOTE

- Instead of Step 2, you can also select the main frame, and then click [Edit] menu → [Rename].
- Instead of Step 3, you can also select the main frame, and then click [Edit] menu → [Edit].

STEP 3: Setting devices

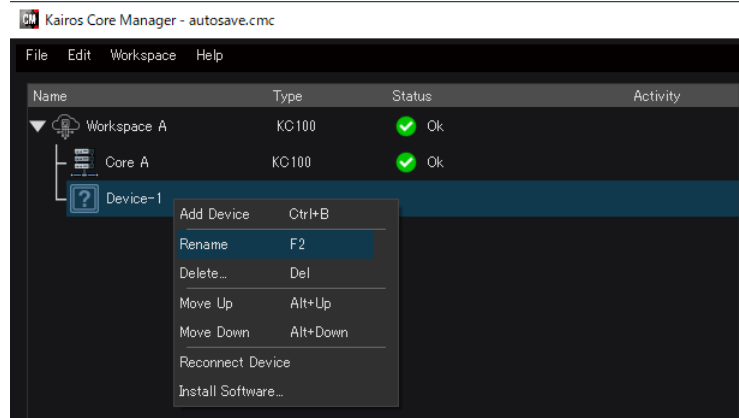
Add and set devices (Creator, Control, and Touch Control) to the Workspace (main).
Up to 10 devices can be registered.

1 Right click the Workspace created in STEP 1, and then select [Add Device].

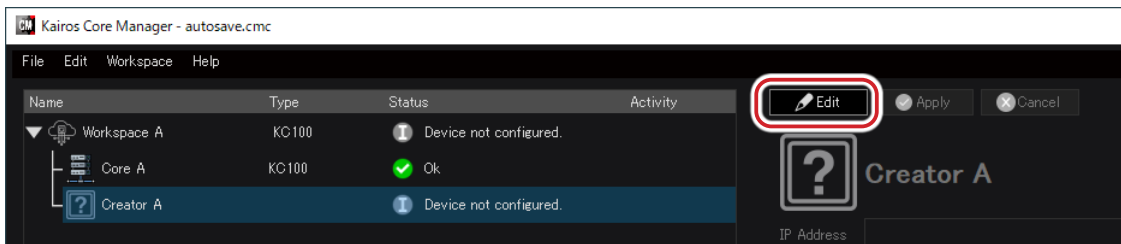


- A new device is created in the Workspace.

2 Right click the new device, select [Rename], enter the name of the device, and then click [OK].

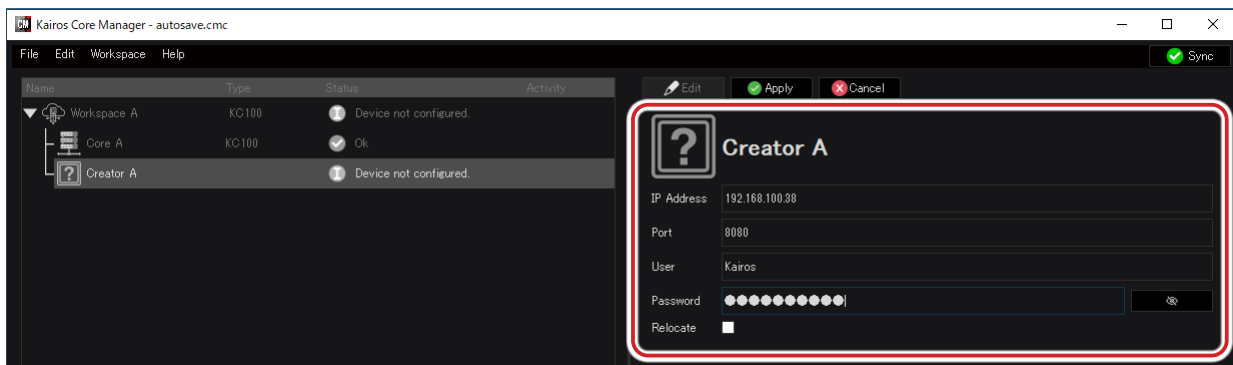


3 Ensure that the new device is selected, and then click [Edit].



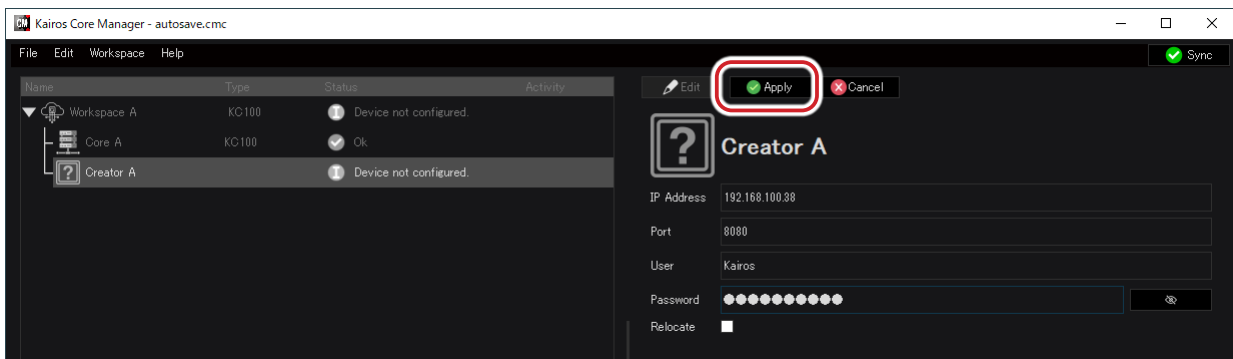
- The settings area switches to device edit mode.

4 Set each item in the settings area.



Item	Description of settings
[IP Address]	Enter the IP address of the device based on your network environment.
[Port]	<p>Enter the port number of the device.</p> <ul style="list-style-type: none"> This is fixed to “8080” for Control. For Creator, enter the [Port] value set in [REST Api] in [Settings] menu → [Creator Settings] on Creator. For Touch Control, click the round button on the lower right of Touch Control, and then enter the [Port] value set in [REST Api] → [REST Api Settings]. <p>* If installing Creator, Kairos Core Manager, and Touch Control on the same PC, ensure that the port numbers are unique.</p> <p>The port number for Kairos Core Manager is set in [Server Port] in the [Web & REST] tab of [File] menu → [Settings...].</p>
[User]	“Kairos” has already been entered. Do not change this.
[Password]	Enter the REST API password set for the device. For details, refer to the KAIROS Operating Guide. Click [Show/Hide] to display the character string of the password.
[Relocate]	Select the checkbox here to automatically switch the connection destination to the main frame in the Workspace of the relocation destination, when relocating the Workspace.

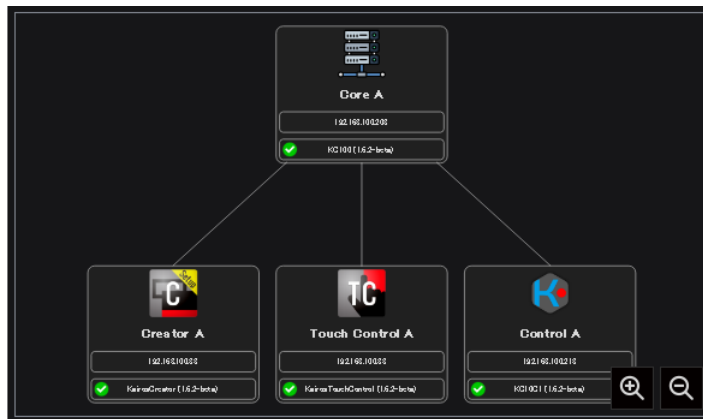
5 Click [Apply].



- If the connection to the device is successful, [Ok] will be displayed in the [Status] column.
- Clicking [Cancel] will exit edit mode without changing any settings.

6 If required, repeat Steps 1 to 5 to add a device.

- After adding a device, click the Workspace (main) to display a configuration diagram showing the network connections between the main frame and devices in the Workspace.



- Clicking [Cancel] will exit edit mode without changing any settings.
- If required, repeat STEP 1 to STEP 3 to add a Workspace (main).

NOTE

- Instead of Step 2, you can also select the new device, and then click [Edit] menu → [Rename].
- Instead of Step 3, you can also select the new device, and then click [Edit] menu → [Edit].

Creating a Workspace (backup)

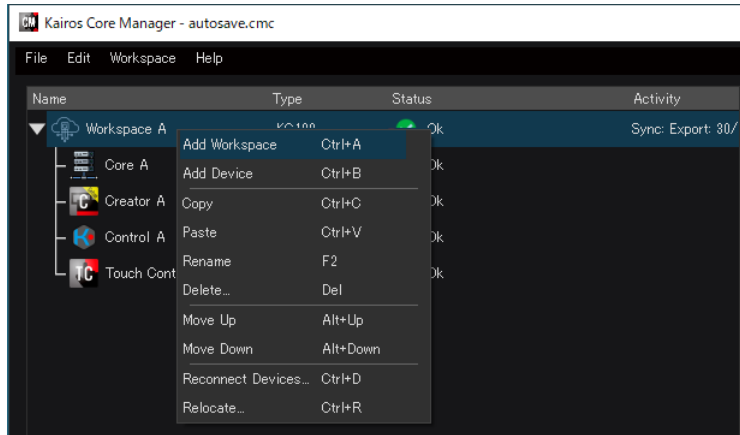
Create a Workspace (backup).

This section describes the procedure for creating and setting a backup Workspace, main frame, and devices.

STEP 1: Creating a Workspace (backup)

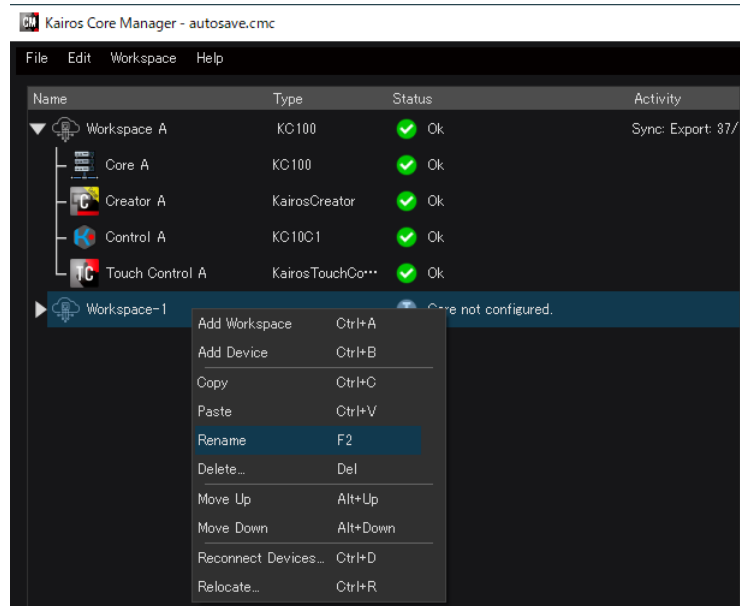
Create a new Workspace, and set it to be used for backup.

1 Right click a Workspace, and then click [Add Workspace].

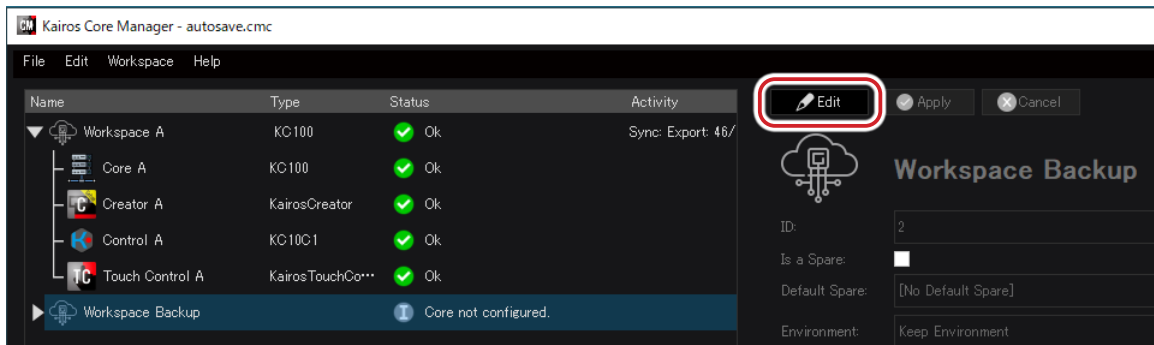


- The new Workspace is created in the Workspace list. The next step is to set this Workspace to be used for backup.

2 Right click the new Workspace, select [Rename], enter the name of the Workspace, and then click [OK].

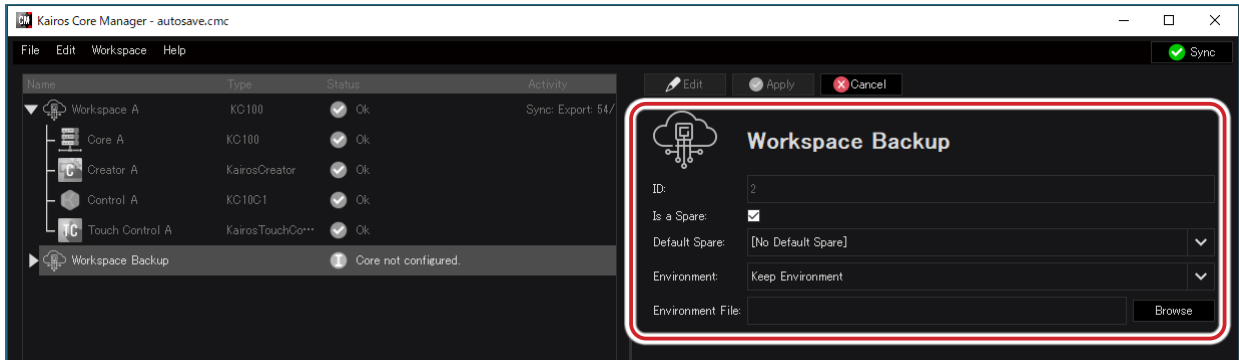


3 Ensure that the new Workspace is selected, and then click [Edit].



- The settings area switches to Workspace edit mode.

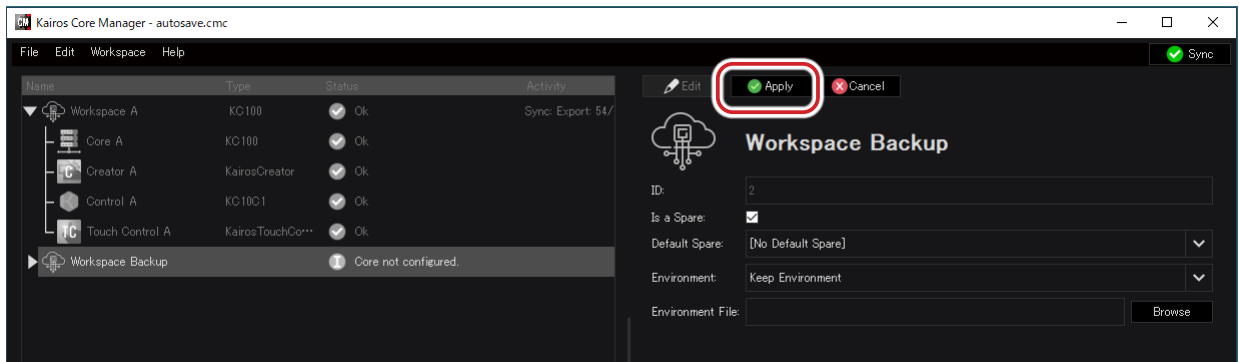
4 Set each item in the settings area.



- The following table describes recommended Workspace (backup) settings. For details on each item, refer to “STEP 1: Creating a Workspace (main)” (page 13).

Item	Description of settings
[Is a Spare:]	Select the checkbox here if this Workspace is to be used for backup.
[Default spare:]	This setting is not required if this Workspace is to be used for backup.
[Environment:]	If this Workspace is to be used for backup, it is recommended to select [Keep Environment].
[Environment File:]	This setting is not required if this Workspace is to be used for backup.

5 Click [Apply].



- Clicking [Cancel] will exit edit mode without changing any settings.

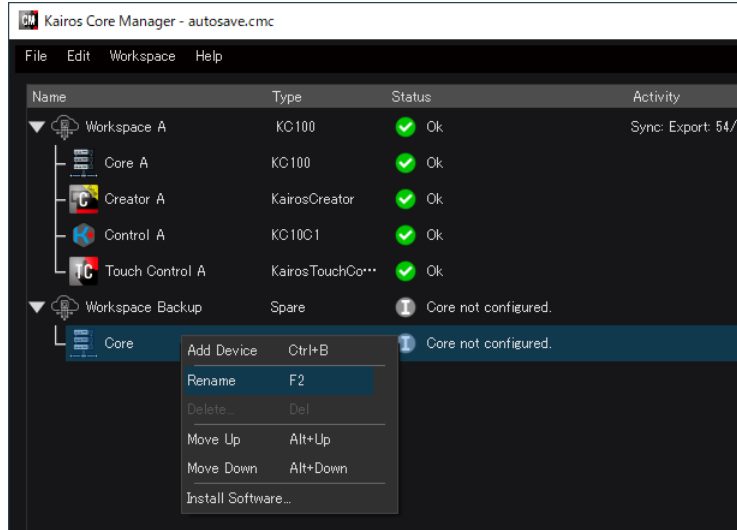
NOTE

- Instead of Step 1, you can also click [Edit] menu → [Add Workspace].
- Instead of Step 2, you can also select the new Workspace, and then click [Edit] menu → [Rename].
- Instead of Step 3, you can also select the new Workspace, and then click [Edit] menu → [Edit].

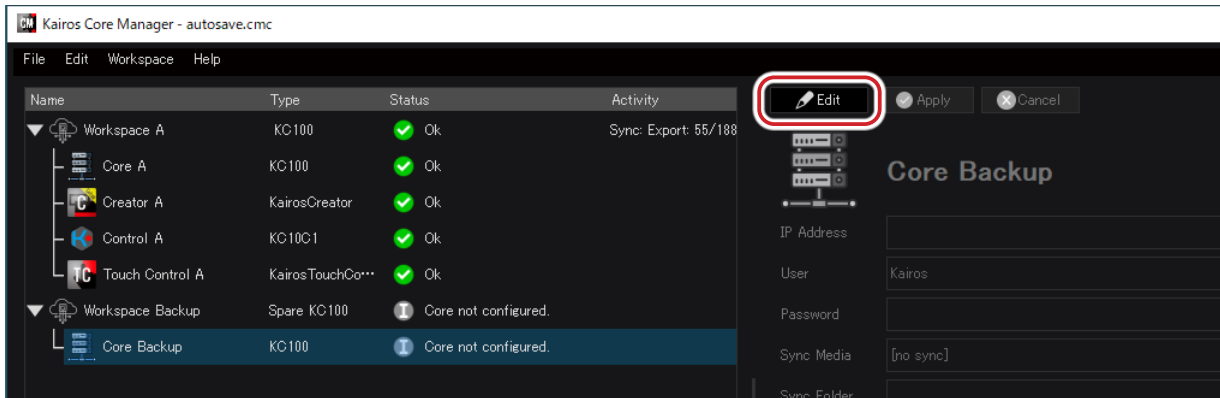
STEP 2: Setting the main frame

Set the backup main frame.

- 1 Open the Workspace (backup) tree.
- 2 Right click the main frame, select [Rename], enter the name of the main frame, and then click [OK].

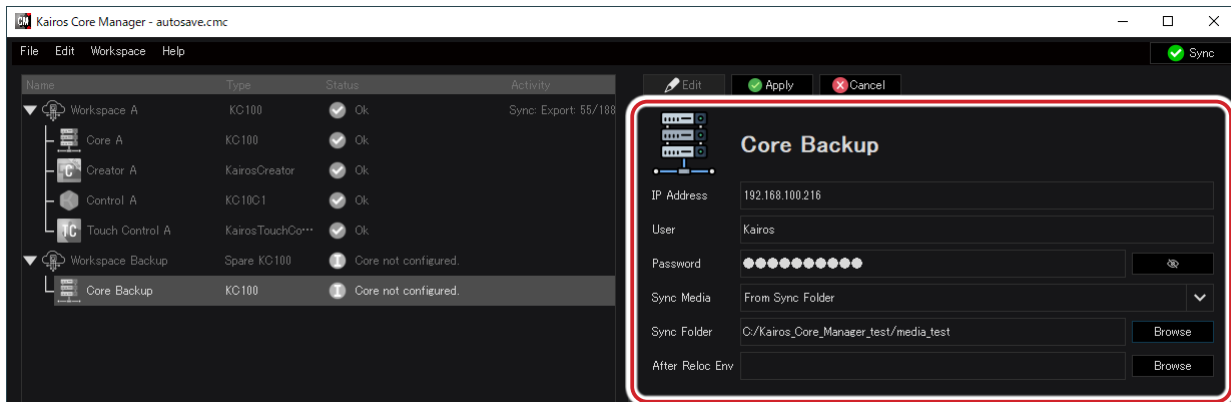


- 3 Ensure that the main frame is selected, and then click [Edit].



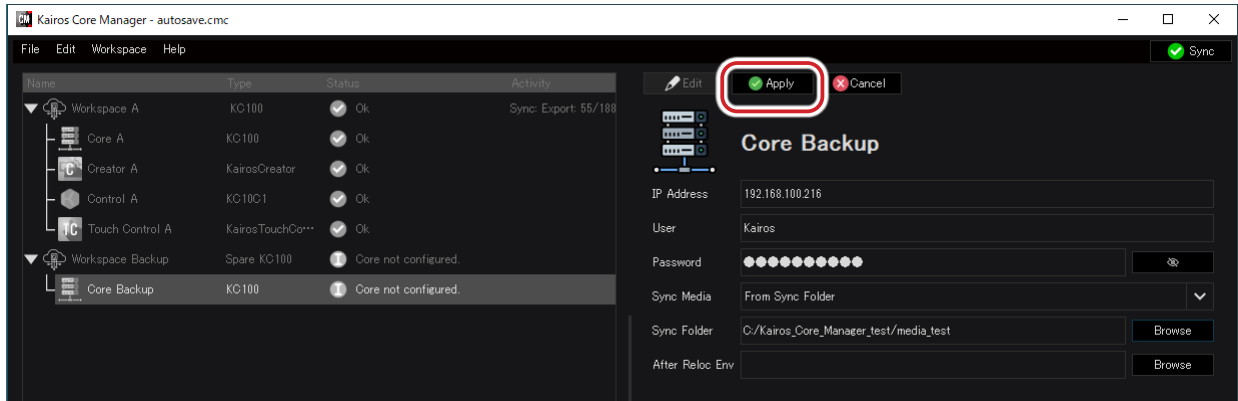
- The settings area switches to main frame edit mode.

- 4 Set each item in the settings area.



- The following table describes recommended main frame (backup) settings. For details on each item, refer to “STEP 2: Setting the main frame” (page 15).

Item	Description of settings
[Sync Media]	For the main frame (backup), it is recommended to select [From Sync Folder] or [Mirror from Sync Folder]. * For information on the [Sync Media] setting of the main frame for main , refer to Step 4 in “STEP 2: Setting the main frame” (page 15).
[After Reloc Env]	This setting is not required for a main frame (backup).

5 Click [Apply].

- If the connection to the main frame is successful, **Ok** will be displayed in the [Status] column for the Workspace and main frame.
- After clicking [Apply], synchronization will begin once the [Sync media] start conditions are met.
- Clicking [Cancel] will exit edit mode without changing any settings.

NOTE

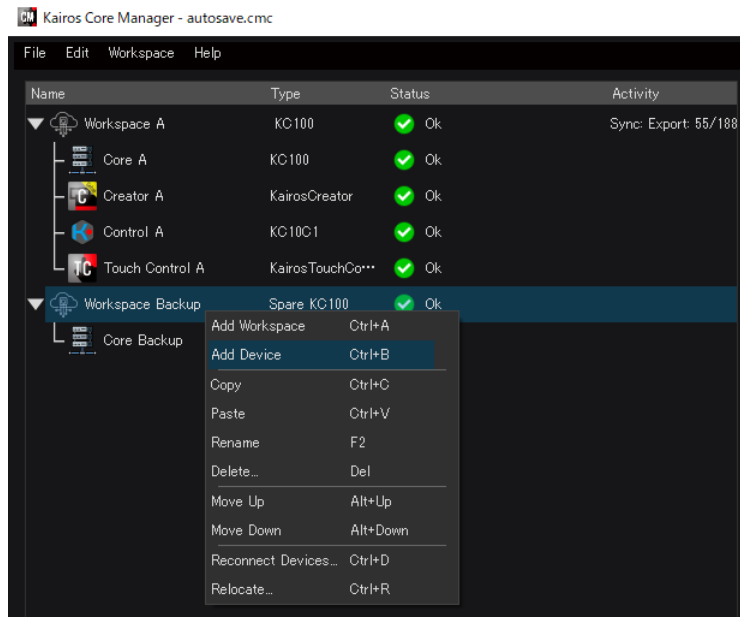
- Instead of Step 2, you can also select the main frame, and then click [Edit] menu → [Rename].
- Instead of Step 3, you can also select the main frame, and then click [Edit] menu → [Edit].

STEP 3: Setting devices

Set any backup devices (Creator, Control, or Touch Control) to place in the Workspace (backup).

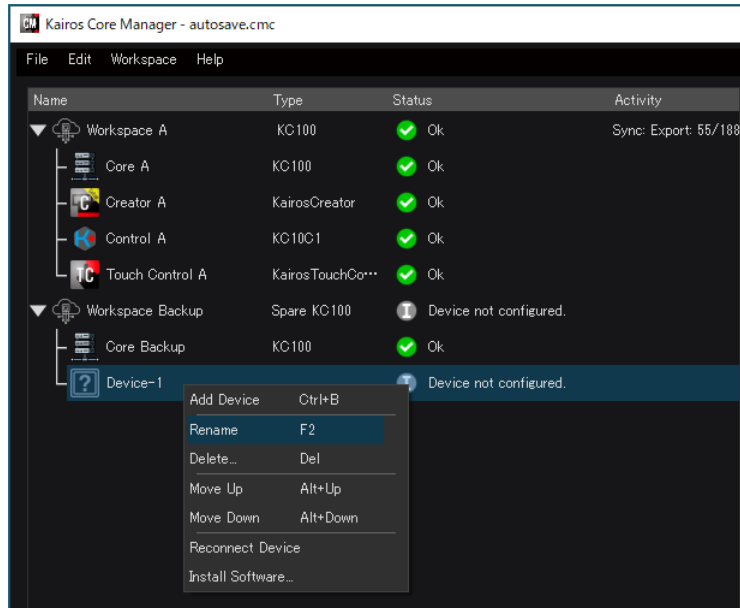
This setting is not required if devices in the Workspace (main) will continue to be used even after Workspace relocation. (This is because device connection destinations are changed according to the [Relocate] setting of each device as described in “Relocating a Workspace” (page 35).) However, the [Relocate] checkbox must be selected in Step 4 of “STEP 3: Setting devices” (page 17) in this situation.

Up to 10 devices can be registered.

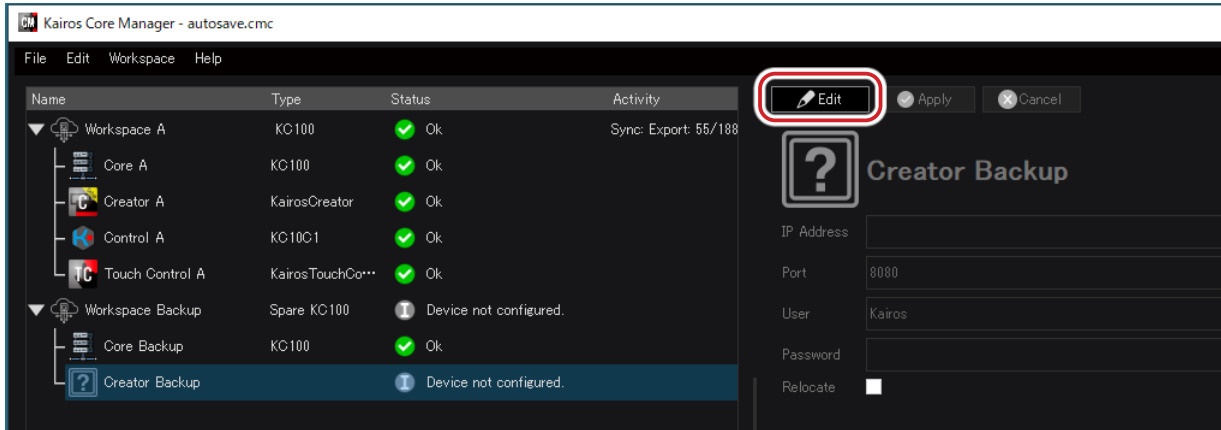
1 Right click the Workspace created in STEP 1, and then select [Add Device].

- A new device is created in the Workspace.

2 Right click the new device, select [Rename], enter the name of the device, and then click [OK].

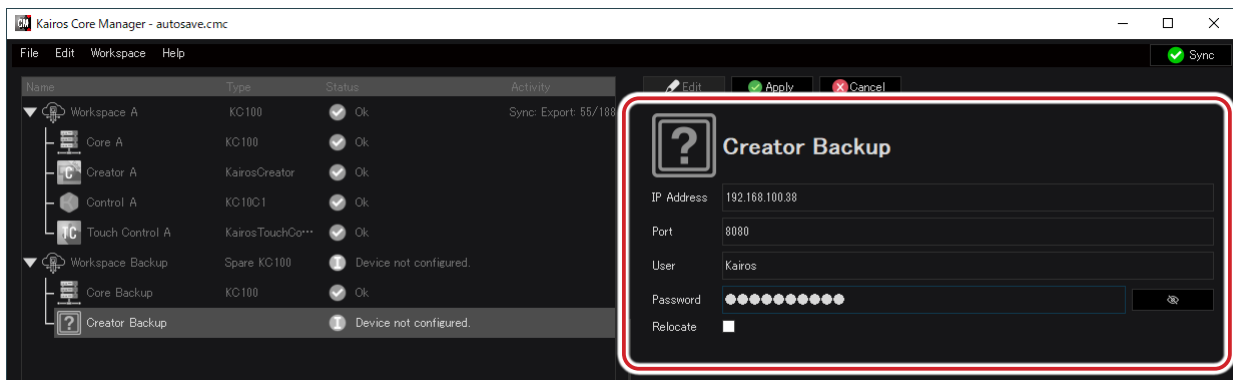


3 Ensure that the new device is selected, and then click [Edit].



- If the connection to the device is successful, **Ok** will be displayed in the [Status] column.
- The settings area switches to device edit mode.

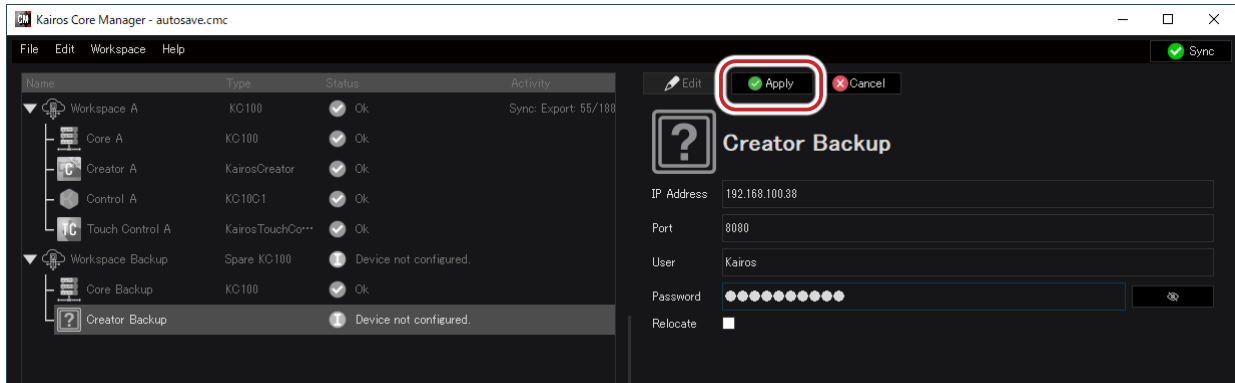
4 Set each item in the settings area.



- The following table describes recommended device (backup) settings. For details on each item, refer to “STEP 3: Setting devices” (page 17).

Item	Description of settings
[Relocate]	For a device (backup), clear the checkbox. * For a device (backup), selecting the checkbox here will automatically switch the connection destination to another Workspace (backup) during Workspace relocation.

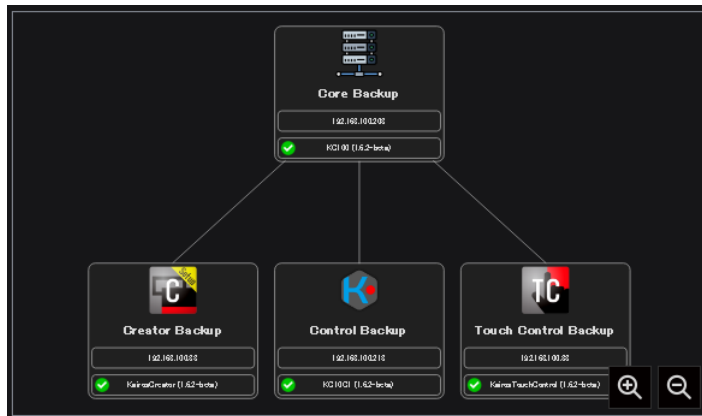
5 Click [Apply].



- Clicking [Cancel] will exit edit mode without changing any settings.

6 If required, repeat Steps 1 to 5 to add a device.

- After adding a device, click the Workspace (backup) to display a configuration diagram showing the network connections between the main frame (backup) and devices in the Workspace.



- Clicking [Cancel] will exit edit mode without changing any settings.
- Repeat STEP 1 to STEP 3 as necessary to add a Workspace (backup).

NOTE

- Instead of Step 2, you can also select the new device, and then click [Edit] menu → [Rename].
- Instead of Step 3, you can also select the new device, and then click [Edit] menu → [Edit].

Editing a Workspace

The following operations are available for items (Workspace, main frame, and device) selected in the Workspace list.

Renaming a Workspace, main frame, or device

- 1 Right click the item in the Workspace list, and then click [Rename].
- 2 Enter the name, and then click [Ok].

NOTE

- Instead of Step 1, you can also select the item in the Workspace list, and then click [Edit] menu → [Rename].

Changing the display order of the Workspace, main frame, or device tree

- 1 Right click the item in the Workspace list, and then click [Move up] or [Move Down].

NOTE

- Instead of Step 1, you can also select the item in the Workspace list, and then click [Edit] menu → [Move up] or [Move Down].

Deleting a Workspace, main frame, or device

- 1 Right click the item in the Workspace list, and then click [Delete...].
- 2 Once the confirmation message is displayed, click [Yes].

NOTE

- Instead of Step 1, you can also select the item in the Workspace list, and then click [Edit] menu → [Delete...].

Changing Workspace, main frame, or device settings

- 1 Select the item in the Workspace list, and then click the [Edit] operation button.
 - The settings area switches to edit mode.
- 2 Set each item in the settings area.
 - Settings differ depending on the item selected in Step 1. For details, refer to the following sections.
 - “STEP 1: Creating a Workspace (main)” (page 13)
 - “STEP 2: Setting the main frame” (page 15)
 - “STEP 3: Setting devices” (page 17)
 - “STEP 1: Creating a Workspace (backup)” (page 19)
 - “STEP 2: Setting the main frame” (page 21)
 - “STEP 3: Setting devices” (page 22)
- 3 Click the [Apply] operation button.
 - Clicking [Cancel] will exit edit mode without changing any settings.

NOTE

- Instead of Step 1, you can also select the item in the Workspace list, and then click [Edit] menu → [Edit].

Copying a Workspace

A new Workspace can be created by copying an existing Workspace.

- 1 Right click the Workspace in the Workspace list, and then click [Copy].
- 2 Right click an empty area of the Workspace list, and then click [Paste].
 - The Workspace selected in Step 1 is pasted to the Workspace list.

NOTE

- Instead of Step 1, you can also select the Workspace in the Workspace list, and then click [Edit] menu → [Paste].

Using a Configuration file

What is a Configuration file?

A Configuration file contains all settings related to the configuration of a Workspace, such as the main frame and devices.

Creating a Configuration file

Create a new Configuration file to create a new Workspace configuration.

Creating a new Configuration file will cause all content in the existing Workspace list to be deleted. You should export the existing Configuration file if you want to save the current configuration. For details, refer to “Exporting a Configuration file” (page 26).

- 1 Click **[File]** menu → **[New...]**.
- 2 Once the confirmation message is displayed, click **[Yes]**.
 - All Workspaces in the Workspace list are deleted.

Exporting a Configuration file

Export the current content of the Workspace list to a file. An exported Configuration file can also be used with Kairos Core Manager installed on another PC.

- 1 Click **[File]** menu → **[Export...]**.
- 2 Specify the export destination and file name, and then click **[Save]**.
 - The Configuration file (.cmc) is exported.

Importing a Configuration file

Import a Configuration file that has been exported.

- 1 Click **[File]** menu → **[Import...]**.
- 2 Select the Configuration file (.cmc), and then click **[Open]**.
 - The Configuration file is imported to the Workspace list.

Updating software

Updating Kairos Core Manager

- 1** Login to PASS on the following website, and then download the Kairos Core Manager software file to the Kairos Core Manager PC.

https://panasonic.biz/sav/kairos_e/

- 2** Double-click the software file (**CoreManager.exe**) downloaded in Step 1.

- Follow the instructions on the screen to install the update. (There is no need to delete the existing Kairos Core Manager installation.)

Updating main frame firmware

- 1** Login to PASS on the following website, and then download the main frame firmware file to the Kairos Core Manager PC.

https://panasonic.biz/sav/kairos_e/

- 2** Right click the main frame in the Workspace list, and then click [Install Software...].

- 3** Specify the firmware file downloaded in Step 1, and then click [Open].

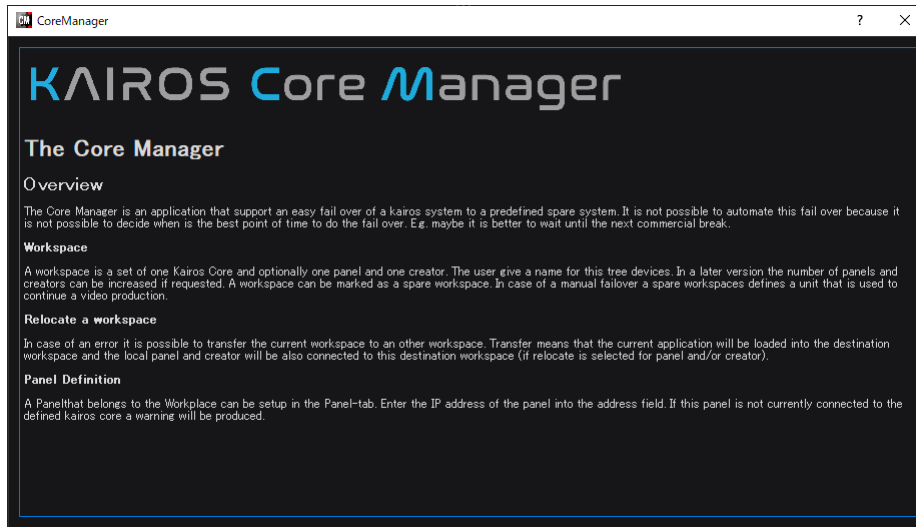
- The firmware update begins.
- Progress is shown in [Activity] in the Workspace list. Updating will take several minutes. If the update is completed successfully, the main frame will be automatically restarted. It can be used normally once it has restarted.

Other operations

Displaying help

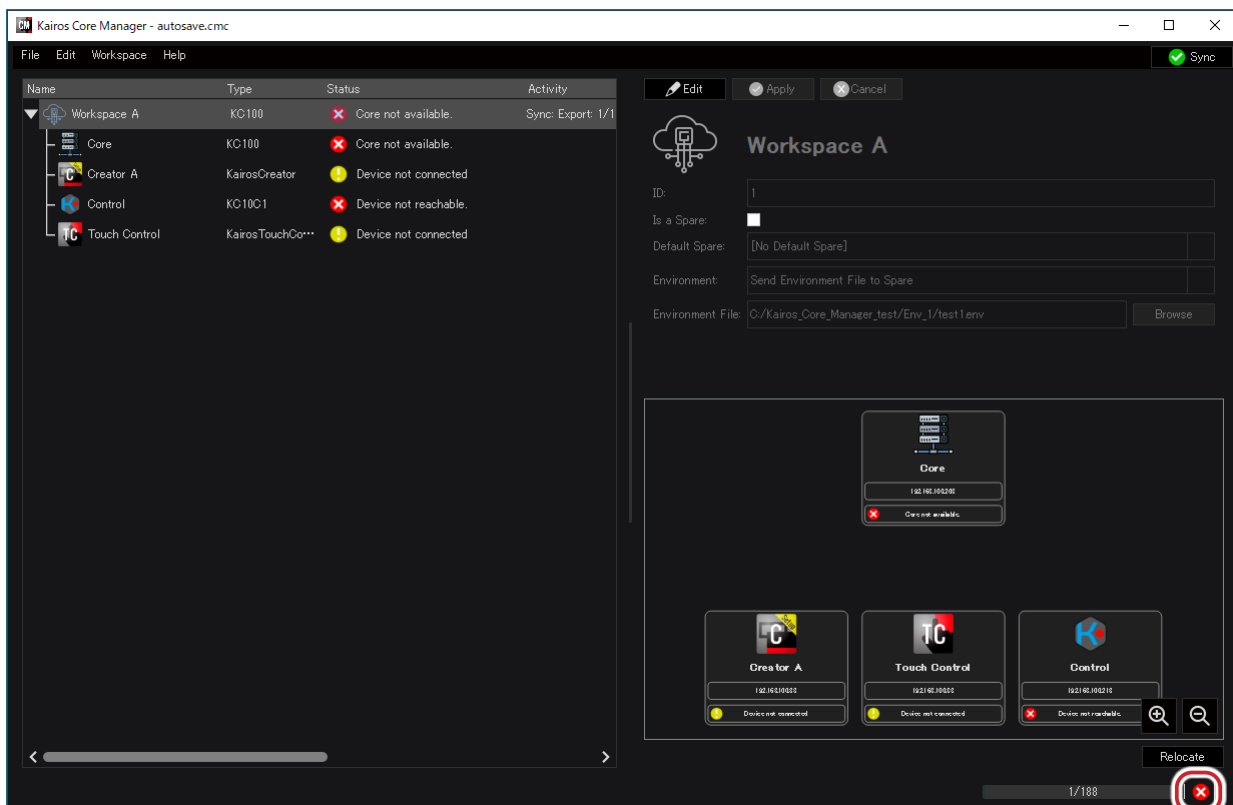
1 Click [Help] menu → [Open Help...].

- A description of Kairos Core Manager is displayed.



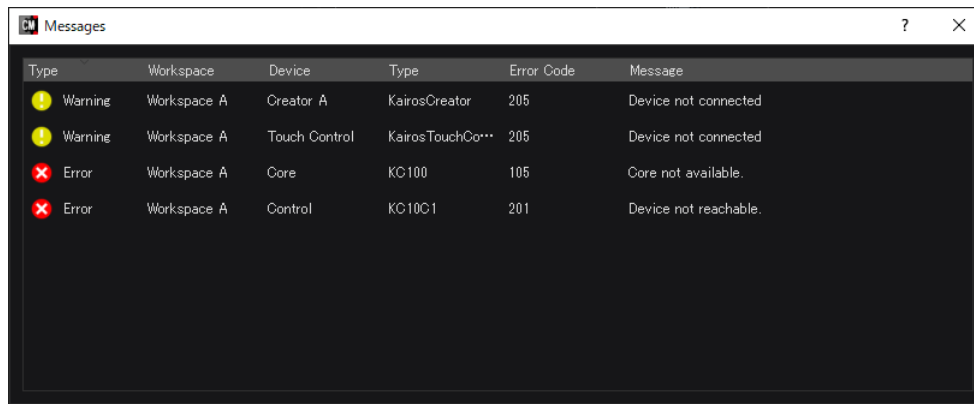
Displaying the message list

1 Click the status display icon on the lower right corner of the screen.



- The error message list is displayed in the [Message] screen.
The type of message, Workspace name and device name in which the error has occurred, product name, error code, and message are displayed.
- The following icons are used to indicate the type of message.
 - (Error): An error has occurred.
 - (Warning): A minor error has occurred.
 - (Info): A notification.

- For details on error codes and messages, refer to “Message list” (page 45).



Type	Workspace	Device	Type	Error Code	Message
Warning	Workspace A	Creator A	KairosCreator	205	Device not connected
Warning	Workspace A	Touch Control	KairosTouchCo...	205	Device not connected
Error	Workspace A	Core	KC100	105	Core not available.
Error	Workspace A	Control	KC1001	201	Device not reachable.

2 Click [X] in the upper right corner of the [Messages] screen.

NOTE

- Instead of Step 1, you can also click [Help] menu → [Show Messages...].
- If Kairos Core Manager has been minimized to the notification area, instead of Step 1, you can also right click the Kairos Core Manager icon in the notification area, and then click [Show Messages...].

Saving the operation log

The operation log is saved in text format (.txt).

1 Click [Help] menu → [Save Log As...].

2 Specify the save destination and file name, and then click [Save].

Checking the software version

Display the current software version of Kairos Core Manager.

1 Click [Help] menu → [About].

- The current version of Kairos Core Manager is displayed.



2 Click [Close].

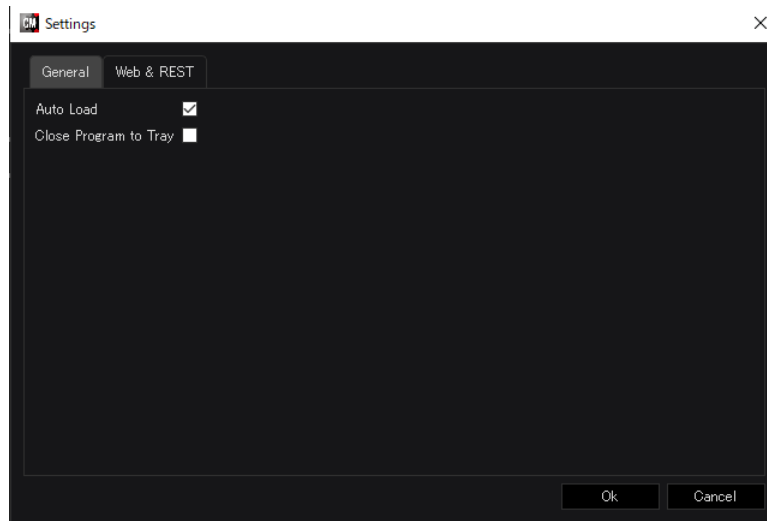
Other operation settings

Configure Kairos Core Manager operations.

1 Click [File] menu → [Settings...].

- The [Settings] screen is displayed.

2 Click the [General] tab, and then set each item.



Item	Description of settings
[Auto Load]	Select the checkbox here to load the Workspace list that was last opened, when the software is started next time. Clear the checkbox to display an empty Workspace list when the software is started next time.
[Close Program to Tray]	This sets what occurs when [X] in the upper right corner of the main screen is clicked. Select the checkbox here to minimize Kairos Core Manager to the notification area and run in the background. Clear the checkbox to exit Kairos Core Manager.

3 Click [OK].

- Clicking [Cancel] will close the [Settings] screen without changing any settings.

Chapter 3 **Operation**

This chapter describes how to operate the main functions of Kairos Core Manager.

Managing media files













Media files can be exported from the main frame to a specified folder. Exported media files can be imported or mirrored to the main frame.

NOTE

- This function differs from [Sync Media] on the main frame as follows, when transferring media files.
 - [Sync Media]: Duplicate files will be skipped (not overwritten).
 - This function: Duplicate files will be overwritten.

Media files

Media files on the main frame consist of the following folders and files.

Folder or file name	How to check in Creator
 clips	Click [MEDIA] tab → [Clip Player] tab.
 fonts	Click [SOURCES] tab → [Painter] tab, and then click [Resource] menu → [Manage fonts...] to display the [Font] dialog.
 freeze	—
 images	Click [SOURCES] tab → [Painter] tab, and then click [Resource] menu → [Manage images...] to display the [Images] dialog.
 luts	Click [Settings] menu → [Import LUT Correction].
 ramrec	Click [MEDIA] tab → [Ram Player] tab.
 sounds	Click [MEDIA] tab → [Audio Player] tab.
 stills	Click [MEDIA] tab → [Stills] tab.
 .media	—
 id_rsa_kairos	—
 system_logs	—
 system_logs.old	—

Exporting media files

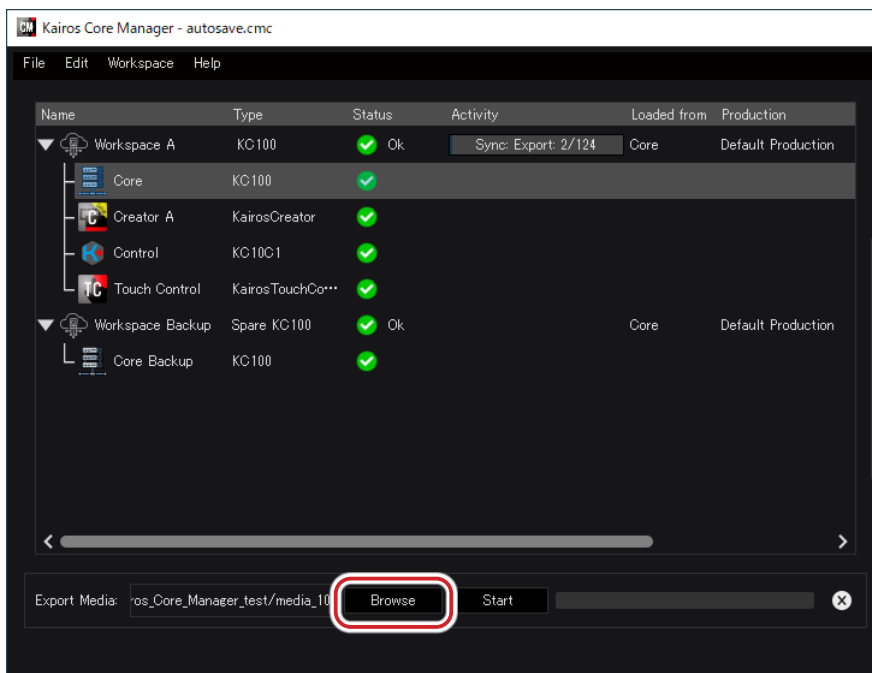
Export all media files from a main frame to a specified folder.

Any folder connected to the same network as the Kairos Core Manager PC can be specified as the export destination.

1 Select the main frame in the Workspace list, and then click [Workspace] menu → [Export Media...].

- The [Export Media] screen is displayed.

2 Click [Browse], and then specify the export destination folder.



3 Click [Start].

- Exporting the media files begins. Progress is displayed in the form of a progress bar with the “Number of exported files / Total number of files” overlaid on top.
- Exporting may take some time depending on the size of the media files. (This may take several hours, based on factors such as the network and the writing speed of the export destination storage device.)
- All media files will be stored in the exported folder.
- Clicking [X] during execution will display a confirmation message allowing you to stop processing.

4 Click [Close].

NOTE

- Exporting will create a .media file in the export destination folder. Do not delete the .media file, as it is required for import/export.

Importing media files

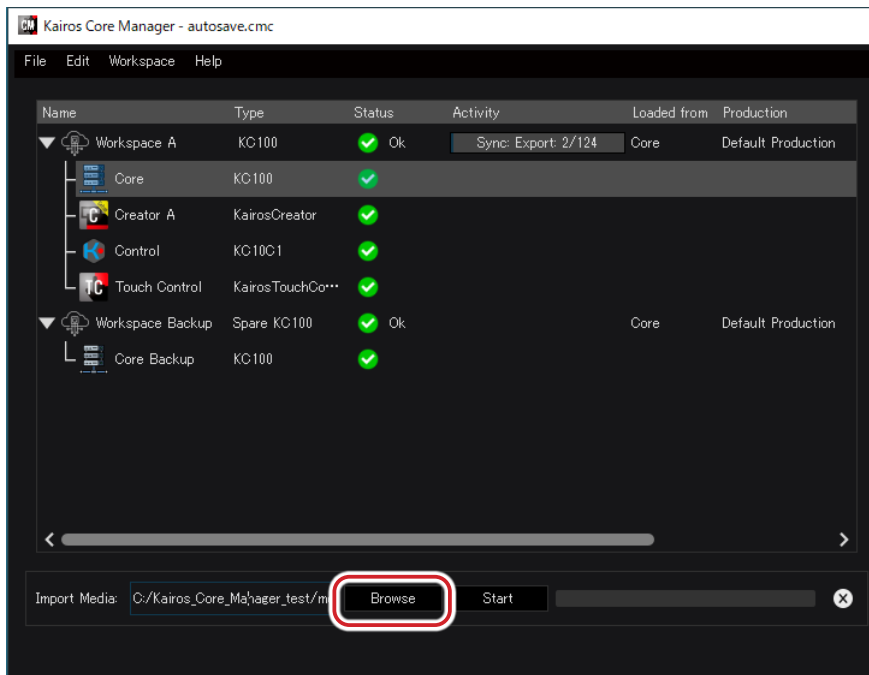
Import media files exported using the procedure described in “Exporting media files” (page 32), to a main frame.

1 Select the main frame in the Workspace list, and then click [Workspace] menu → [Import Media...].

- The [Import Media] screen is displayed.

2 Click [Browse], and then specify the folder to store the imported media files.

- Specify the same folder as the export destination specified in Step 2 of “Exporting media files” (page 32).



3 Click [Start].

- Importing the media files begins. Progress is displayed in the form of a progress bar with the “Number of imported files / Total number of files” overlaid on top.
- Importing may take some time depending on the size of the media files.
- Clicking [X] during execution will display a confirmation message allowing you to stop processing.

4 Click [OK] when [Complete] is displayed.

Mirroring media files

Mirror a folder containing media files (master folder) to a main frame.

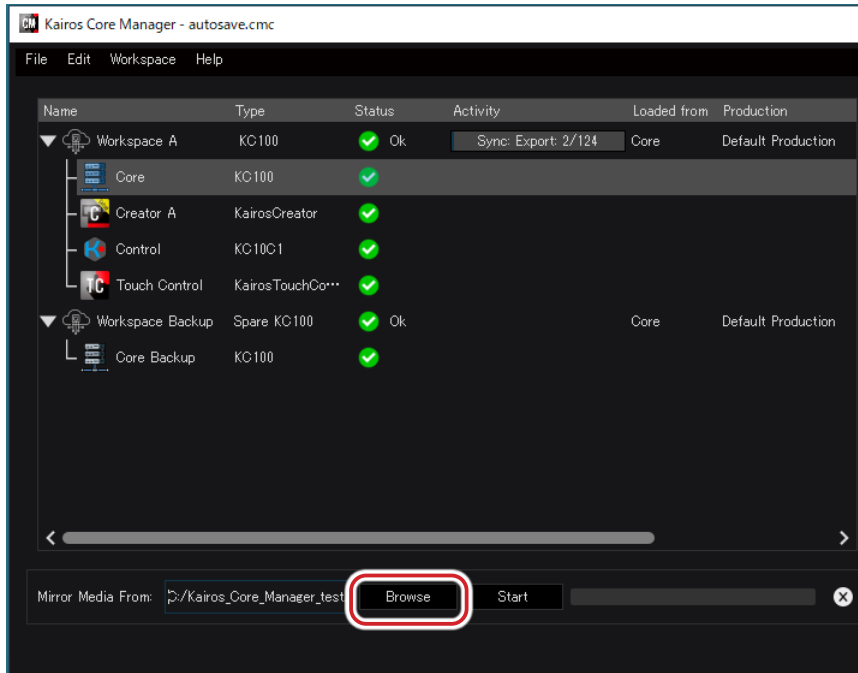
Any folder connected to the same network as the Kairos Core Manager PC can be specified as the master folder.

Mirroring will copy all media files in the master folder to the main frame, and will delete from the main frame any media files in the main frame but not in the master folder.

Once mirroring is complete, the main frame and master folder will contain the same media files.

1 Select the main frame in the Workspace list, and then click [Workspace] menu → [Mirror Media from...].

- The [Mirror Media from] screen is displayed.

2 Click [Browse], and then select the master folder.**3** Click [Start].

- Importing the media files begins. Progress is displayed in the form of a progress bar with the “Number of mirrored files / Total number of files” overlaid on top.
- Mirroring may take some time depending on the size of the media files.
- Clicking [X] during execution will display a confirmation message allowing you to stop processing.

4 Click [Close].

Relocating production environments

Relocating a Workspace

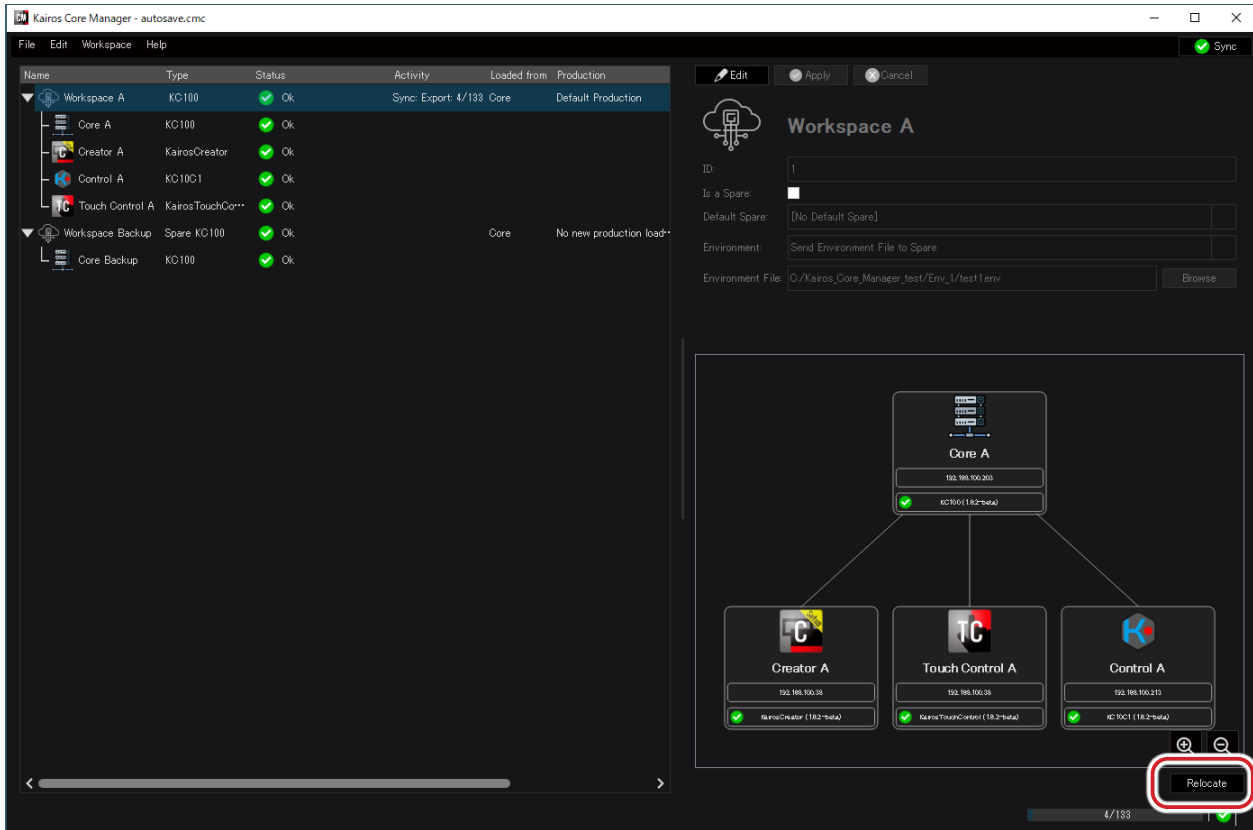
The production environment of a Workspace (main) can be relocated to a Workspace (backup).

The following processes are performed during relocation.

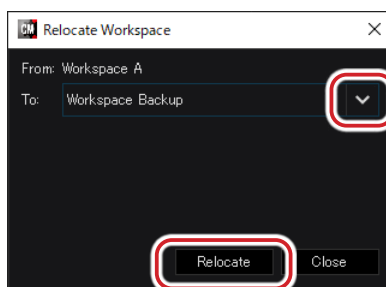
- The most recent Production file is copied from the main frame (main) to the main frame (backup).
- Device connection destinations are changed according to the [Relocate] setting of each device.
- An Environment file is transferred to the main frame (backup) according to the [Environment:] setting of the Workspace (main).

This section describes the procedure for using Kairos Core Manager to relocate a Workspace.

1 Select the Workspace (main) to relocate from, and then click [Relocate].



2 Click the [To:] list button, select the Workspace (backup) to relocate to, and then click [Relocate].



- The Workspace is relocated. It will take several seconds to several dozens of seconds for the process to complete.

3 Click [Close].

NOTE

- Instead of Step 1, you can also select the Workspace (main) to relocate from, and then click [Workspace] menu → [Relocate...].
- Instead of Step 1, you can also right click the Workspace (main) to relocate from, and then click [Relocate...].

Manually relocating multiple devices

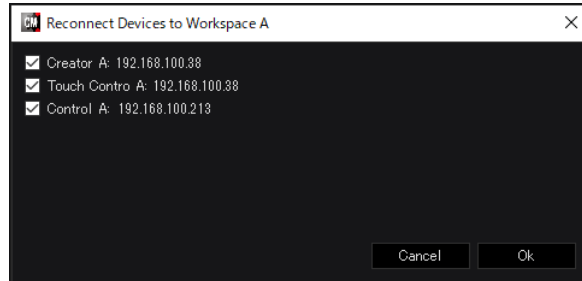
Manually switch the connection destination for multiple devices, from the current Workspace to another Workspace.


This function is used to manually switch the connection destination if, for example, the [Relocate] checkbox was cleared in “STEP 3: Setting devices” (page 17).

This function is also used for situations such as reconnecting devices that were connected to the main frame in a Workspace (backup), to a main frame in a Workspace (main), for Workspace relocation.

1 Right click the target Workspace, and then click [Reconnect Devices...].

2 Select the checkbox for the device to reconnect, and then click [OK].



- Clicking [Cancel] will close the [Reconnect Devices] screen without changing any settings.
- If reconnection is successful,  Ok will be displayed in the [Status] column of the device.

NOTE

- Instead of Step 1, you can also select the target Workspace in the Workspace list, and then click [Workspace] menu → [Reconnect Devices...].


Manually relocating a single device

Manually switch the connection destination of a device, from the current Workspace to another Workspace.

This function is used to manually switch the connection destination if, for example, the [Relocate] checkbox was cleared in “STEP 3: Setting devices” (page 17).

This function is also used for situations such as reconnecting a device that was connected to the main frame in a Workspace (backup), to a main frame in a Workspace (main), for Workspace relocation.

1 Right click the target device, and then click [Reconnect Device].

- If reconnection is successful,  Ok will be displayed in the [Status] column of the device.

Managing Production/Environment files

Saving a Production file

Save the Production file currently being used on a main frame to the specified folder.

- 1 Select the main frame in the Workspace list, and then click [Workspace] menu → [Save Production...].**
- 2 Specify the save destination and file name, and then click [Save].**
 - The Production file (.apl) is exported.

Loading a Production file

Load a Production file from the Kairos Core Manager PC to a main frame.

- 1 Select the main frame in the Workspace list, and then click [Workspace] menu → [Load Production...].**
- 2 Select the Production file (.apl), and then click [Open].**
 - The Production file (.apl) is loaded on the main frame selected in Step 1.
 - The location from where the Production file was loaded and the name of the file are displayed under [Loaded from] and [Production], respectively, in the Workspace list. (page 12)

Saving an Environment file

Save the Environment file currently being used on a main frame to the specified folder.

- 1 Select the main frame in the Workspace list, and then click [Workspace] menu → [Save Environment...].**
- 2 Specify the save destination and file name, and then click [Save].**
 - The Environment file (.env) is exported.

Loading an Environment file

Load an Environment file from the Kairos Core Manager PC to a main frame.

- 1 Select the main frame in the Workspace list, and then click [Workspace] menu → [Load Environment...].**
- 2 Select the Environment file (.env), and then click [Open].**
 - The Environment file (.env) is loaded on the main frame selected in Step 1.

Chapter 4 **Web interface**

The web interface can be used to run some Kairos Core Manager functions.

Preliminary settings

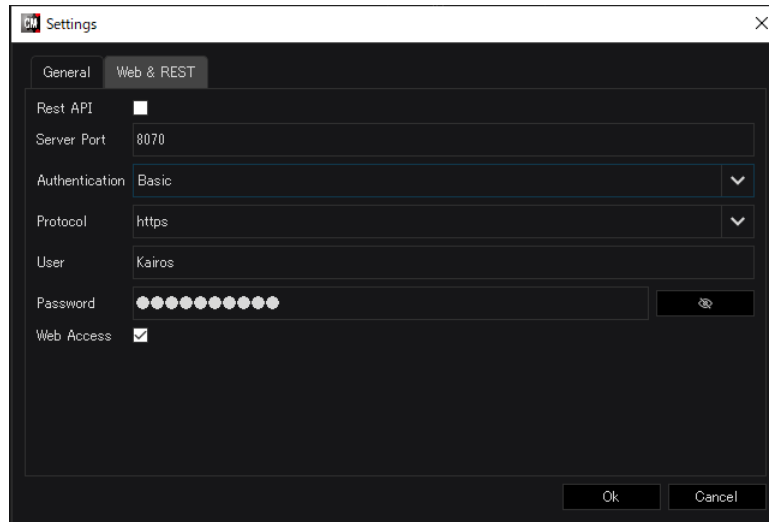
Web settings

Configure the following settings to use the web interface.

1 Click **[File]** menu → **[Settings...]**.

- The **[Settings]** screen is displayed.

2 Click the **[Web & REST]** tab, and then set each item.



Item	Description of settings
[Rest API]	Not required. For details on this item, refer to “Command line interface” (page 41).
[Server Port]	Enter the port number of Kairos Core Manager. • If installing Creator, Kairos Core Manager, and Touch Control on the same PC, ensure that the port number of Creator (the [Port] setting of the device) and the port number of Kairos Core Manager are different.
[Authentication]	Click the list button to select the authentication method ([None], [Basic], or [Digest]).
[Protocol]	Click the list button to select the protocol ([http] or [https]).
[User]	The name of the user for connecting to the Kairos Core Manager PC. “Kairos” has already been entered. Do not change this.
[Password]	Set the password for connecting to the Kairos Core Manager PC.
[Web Access]	Select the checkbox here to use the web interface.

3 Click **[OK]**.

- Clicking **[Cancel]** will close the **[Settings]** screen without changing any settings.

4 To enable the settings, click **[OK]** on the message screen indicating that Kairos Core Manager must be restarted.

- Clicking **[Cancel]** will close the **[Settings]** screen without changing any settings.

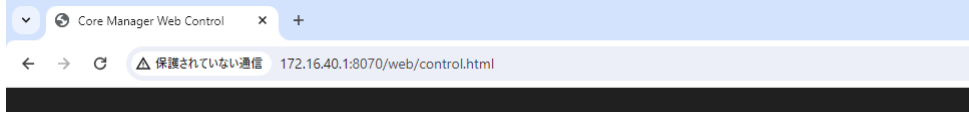
5 Restart Kairos Core Manager.

Relocating production environments

For details and execution results, refer to the explanation in Chapter 3.

1 Access the following URL from the web browser on the PC.

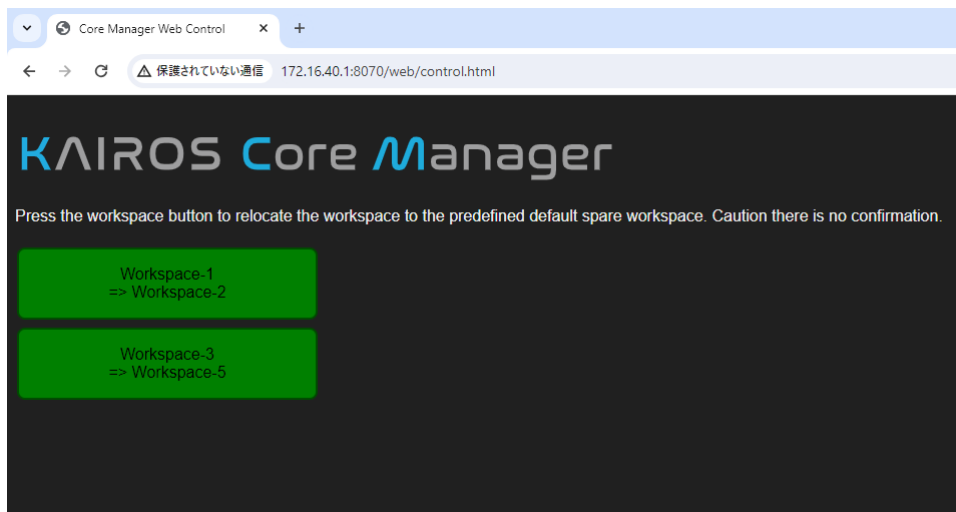
- `https://<IP address of Kairos Core Manager PC>:<Port number>/`
 - The URL will begin with either “https://” or “http://”, depending on what was selected for [Protocol] in the [Web & REST] tab of [File] menu → [Settings...].
 - Enter the port number set in [Server Port] in the [Web & REST] tab of [File] menu → [Settings...].



2 On an authentication screen in the web browser, enter the user name and password.

- Enter “Kairos” as the user name.
- Enter what was set in the [Web & REST] tab of [File] menu → [Settings...] as the password.

3 Select the appropriate green button (indicating “Workspace (main) to relocate => Workspace (backup)”).



Chapter 5 **Command line interface**

The command line interface can be used to run some Kairos Core Manager functions.

Preliminary settings

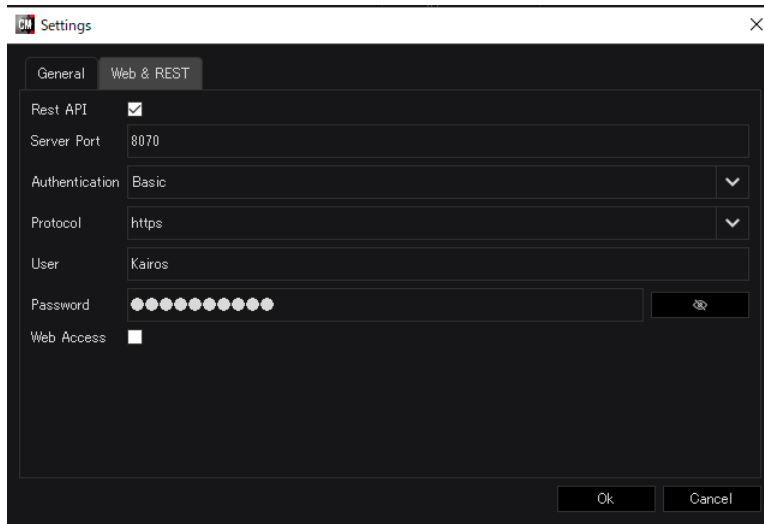
REST API settings

Configure the following settings to use the command line interlace.

1 Click **[File]** menu → **[Settings...]**.

- The **[Settings]** screen is displayed.

2 Click the **[Web & REST]** tab, and then set each item.



Item	Description of settings
[Rest API]	Select the checkbox here to use the command line interface.
[Server Port]	Enter the port number of Kairos Core Manager. • If installing Creator, Kairos Core Manager, and Touch Control on the same PC, ensure that the port number of Creator (the [Port] setting of the device) and the port number of Kairos Core Manager are different.
[Authentication]	Click the list button to select the authentication method ([None], [Basic], or [Digest]).
[Protocol]	Click the list button to select the protocol ([http] or [https]).
[User]	The name of the user for connecting to the Kairos Core Manager PC. "Kairos" has already been entered. Do not change this.
[Password]	Set the password for connecting to the Kairos Core Manager PC.
[Web Access]	Not required. For details on this item, refer to "Web interface" (page 38).

3 Click **[Ok]**.

- Clicking **[Cancel]** will close the **[Settings]** screen without changing any settings.

4 To enable the settings, click **[OK]** on the message screen indicating that Kairos Core Manager must be restarted.

- Clicking **[Cancel]** will close the **[Settings]** screen without changing any settings.

5 Restart Kairos Core Manager.

Relocating production environments

For details and execution results, refer to the explanation in Chapter 3.

The following example command will relocate the Workspace (main) to the Workspace (backup).

Example)

https://172.16.10.40.1:8070/api/v1/workspace/3?relocate=to-default

(A)	Enter either "http" or "https", depending on what was selected for [Protocol] in the [Web & REST] tab of [File] menu → [Settings...].
(B)	Enter the IP address of the Kairos Core Manager PC.
(C)	Enter the port number set in [Server Port] in the [Web & REST] tab of [File] menu → [Settings...].
(D)	Enter the Workspace [ID:] of the main frame (main).

The production environment will be relocated to the Workspace selected for [Default spare:] during Step 4 in "STEP 1: Creating a Workspace (main)" (page 13).

Chapter 6 **Appendix**

This chapter describes how to handle error messages.

Message list

The following list describes messages displayed in the [Status] column of the Workspace list, and the [Error Code] column and [Message] column of the [Messages] screen. It also provides possible solutions.

Message type	Code No.	Message	Description and possible solution
Error	100	[CorePasswordOrUserWrong]	Enter the correct password or user name for the main frame.
Error	105	[Core Not Available]	The main frame is not available.
Error	200	[Device Not Configured]	The device has not been fully configured.
Error	201	[Device Not Reachable]	The device cannot be found.
Error	207	[DeviceRestAPINotAvailable]	The REST API of the device is not available.
Error	208	[DeviceUnknownError]	There is an unknown error for the device.
Error	300	[SyncDestFolderNotExist]	The Sync Folder does not exist.
Error	301	[SyncDestIsNoMediaFolder]	The Sync Folder is not a media file folder.
Error	302	[SyncSrcIsNoMediaFolder]	There are no media files in the Sync Folder of the synchronization destination.
Error	310	[Sync import of media failed]	Failed to copy media files from the Sync Folder to the main frame.
Error	311	[SyncExportFailed]	Failed to copy media files from the main frame to the Sync Folder.
Error	312	[Sync mirror of media failed]	Failed to mirror synchronize media files.
Error	350	[SyncDiskFull]	There is not enough available space in the Sync Folder.
Error	401	[Export failed, exported data may not complete]	Failed to export media files. Exported data is not complete.
Error	402	[ExportFailedDiskFull]	Failed to export media files due to lack of available space.
Error	420	[ImportFailed]	Failed to import media files.
Error	440	[MirrorFailed]	Failed to mirror media files.
Warning	101	[CorePasswordNotSet]	A password has not been set for the main frame.
Warning	102	[CoreUserNotSet]	A user name has not been set for the main frame. Enter "Kairos".
Warning	202	[DevicePasswordOrUserWrong]	Enter the correct password or user name for the device.
Warning	203	[DevicePasswordNotSet]	A password has not been set for the device.
Warning	204	[DeviceUserNotSet]	A user name has not been set for the device. Enter "Kairos".
Warning	205	[Device Not Connected]	Unable to connect to the device.
Warning	206	[DeviceConnectedToOtherDevice]	The device is unable to connect to another device.
Info	104	[CoreNotConfigured]	The main frame has not been fully configured.

Panasonic Connect Co., Ltd.

Web Site (Global): <https://pro-av.panasonic.net/en/>

(Japan): https://connect.panasonic.com/jp-ja/products-services_proav

© Panasonic Connect Co., Ltd. 2024