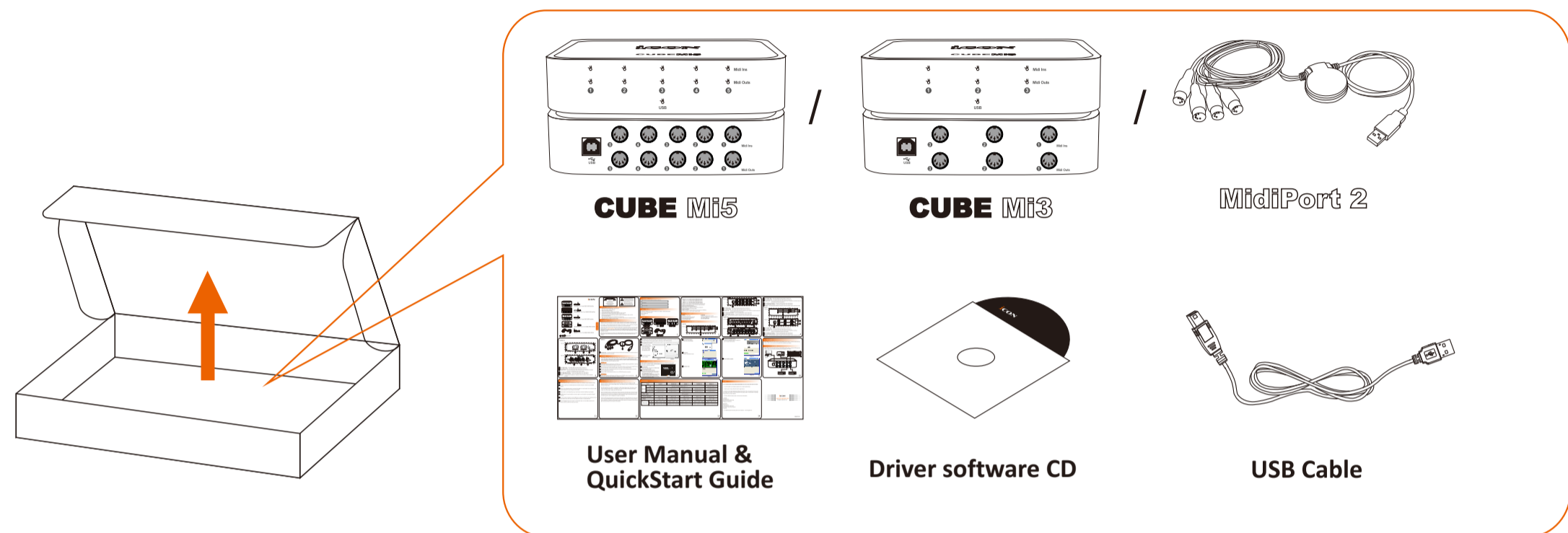




## 1 Unpack



Note: Cube Mi5 / Cube Mi3 / MidiPort 2 USB2.0 MIDI interface in Pack

## 2 MAC Turn on your Mac

Connect the USB cable provided between a USB port on your Mac and the USB port on your USB MIDI interface. Your Mac should “find” the interface and install its driver automatically.



## 3 Set up your DAW or MIDI software

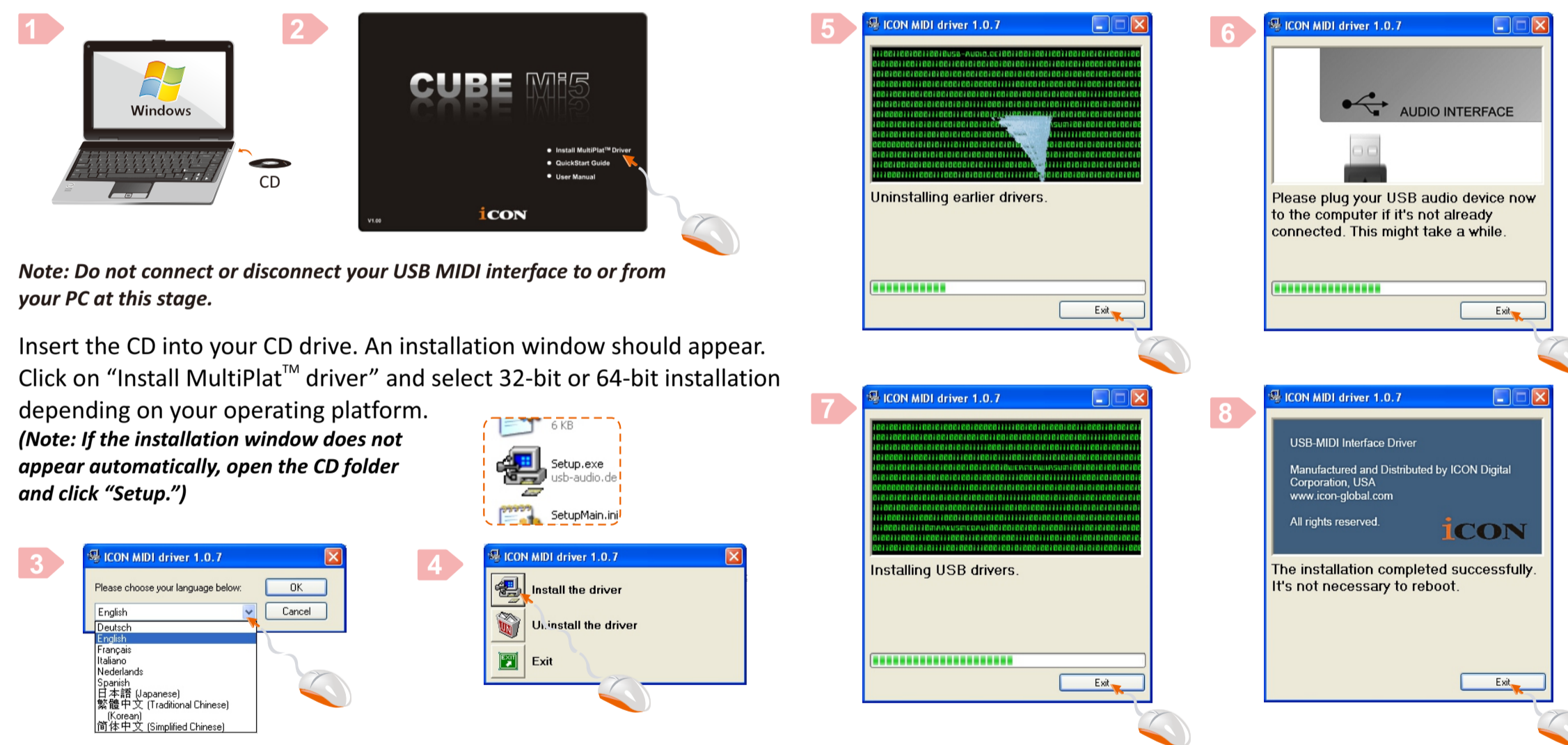
Activate the ICON USB MIDI ports in your DAW or MIDI software using “MIDI setup” or “MIDI devices”  
(Note: Every application does this a little differently, so refer to your software user manual for the settings.)

## 4 PC Turn on your computer

Connect the USB cable provided between a USB port on your PC and the USB port on your USB MIDI interface. Your PC should “find” the interface and install its driver automatically.



## 5 Install the MultiPlat™ software driver



Note: Do not connect or disconnect your USB MIDI interface to or from your PC at this stage.

Insert the CD into your CD drive. An installation window should appear. Click on “Install MultiPlat™ driver” and select 32-bit or 64-bit installation depending on your operating platform.  
(Note: If the installation window does not appear automatically, open the CD folder and click “Setup.”)

## 6 Set up your DAW or MIDI software

Activate the ICON USB MIDI ports in your DAW or MIDI software using “MIDI setup” or “MIDI devices”  
(Note: Every application does this a little differently, so refer to your software user manual for the settings.)

