

Kramer Electronics, Ltd.



**Kramer K-UPLOAD Guide
Revision 2**

Intended for Kramer Technical Personnel or external System Integrators.

To check that you have the latest version, go to the DOWNLOADS section of our Web site at:

<http://www.kramerelectronics.com/support/downloads.asp>

Contents

1	Introduction	1
2	Using K-UPLOAD	1
2.1	Downloading from the Internet	1
2.2	Connecting the PC to the Machine	1
3	Using the utility	2
4	Kramer Package Upload Process	4
4.1	Upload a Kramer Package File	4
5	System Security	7

Figures

Figure 1:	The Main Screen	2
Figure 2:	Connect to the Machine	2
Figure 3:	Communication Error Message	3
Figure 4:	Save Device Properties	3
Figure 5:	Select a Package File	4
Figure 6:	Device Upgrade Message	5
Figure 7:	File Upload	5
Figure 8:	File Upload Progress	6
Figure 9:	Restart the Unit	6
Figure 10:	K-Upload Log-in	7
Figure 11:	User Enabled Screen	7

1 Introduction

This document describes the functionality of the K-UPLOAD application which can upload a multi-file package (*.kpt or a single file, such as *.kfw (firmware), *.rbf (FPGA binary) and so on, depending on the specific device) to a device.

Kramer's high quality machines usually require the uploading of several files, such as firmware version, FPGA version (sometimes more than one), different binary files, and so on.

Uploading each of these files separately may cause version mismatches which can lead to irregular machine behavior. To solve this problem, all new utility uploads are prepared in one upload package (*.kpt) that includes all the data needed to upgrade the machine to a new version.

2 Using K-UPLOAD

Upgrade should be carried out by skilled technical personnel. Failure to upgrade correctly will result in the malfunction of the machine

To use K-UPLOAD:

- Download the software from the Internet
- Connect the PC to the machine

2.1 Downloading from the Internet

The latest version of K-UPLOAD and installation instructions can be downloaded from the Kramer Web site at www.kramerelectronics.com

You can download the up-to-date file from the Internet. To do so:

1. Go to our Web site at www.kramerelectronics.com and download the file: "kUpload.msi" from the Technical Support section.
2. Install the Program.

2.2 Connecting the PC to the Machine

To use K-UPLOAD you have to connect the PC to the machine via RS-232, USB or the Ethernet (defined in the user manual of the machine).

3 Using the utility

The following sections describe how to use K-UPLOAD.

1. Double click the K-UPLOAD desktop icon.
The main screen appears:

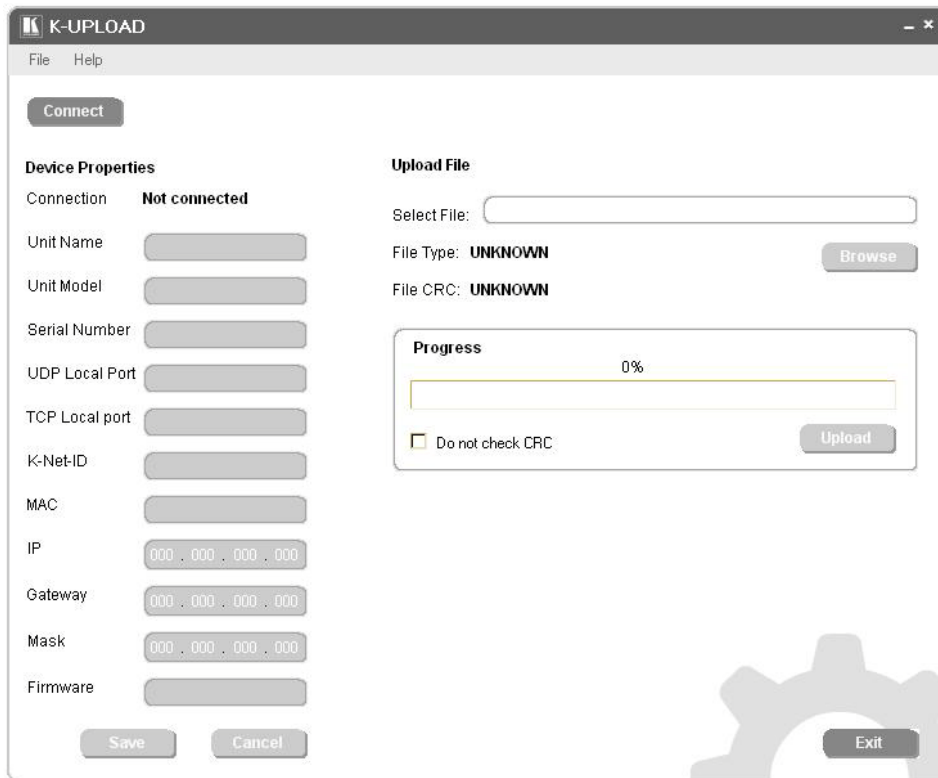


Figure 1: The Main Screen

2. Click the **Connect** button to connect to the machine.
The connect dialog appears:

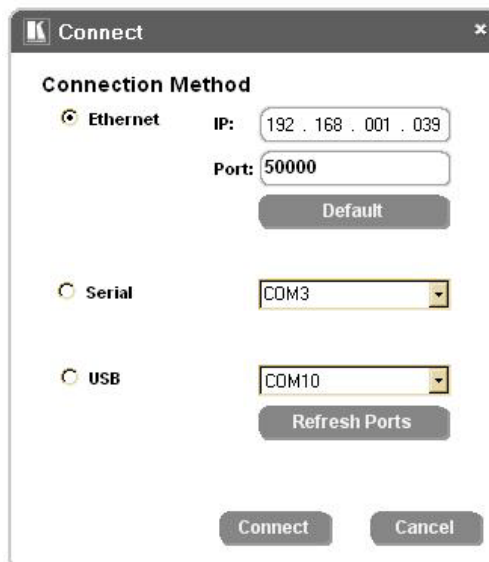


Figure 2: Connect to the Machine

3. Select the connection method and click **Connect**.
If the connection fails, an error message appears:

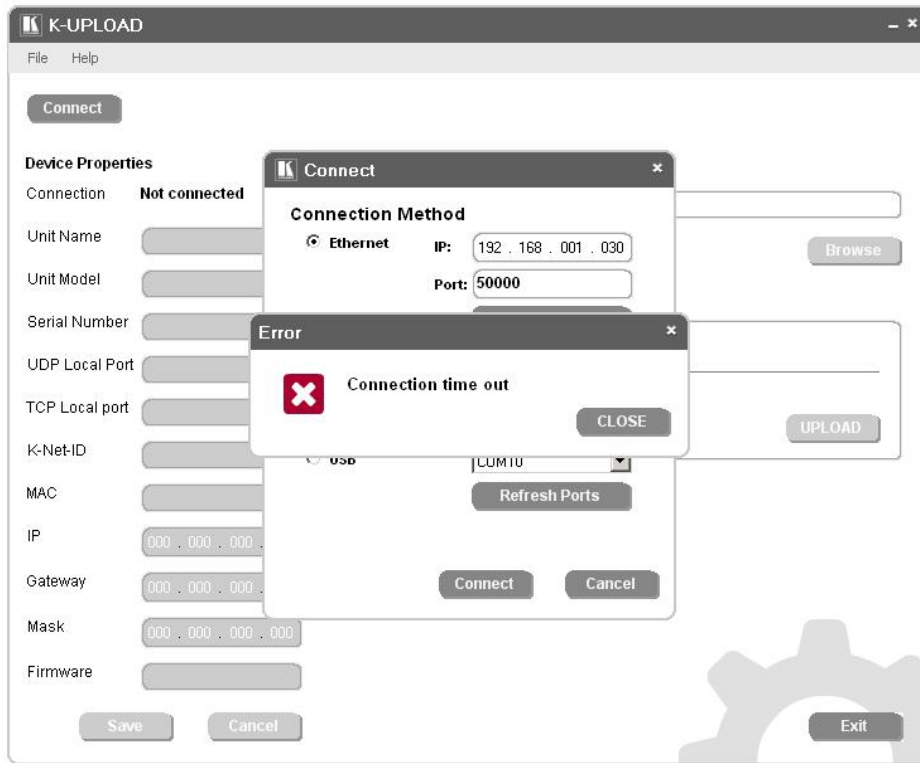


Figure 3: Communication Error Message

Click **CLOSE** and then check that the network is functioning, that you used the correct communication method, that the required cables are connected and that the machine is powered.

Click **Connect**.

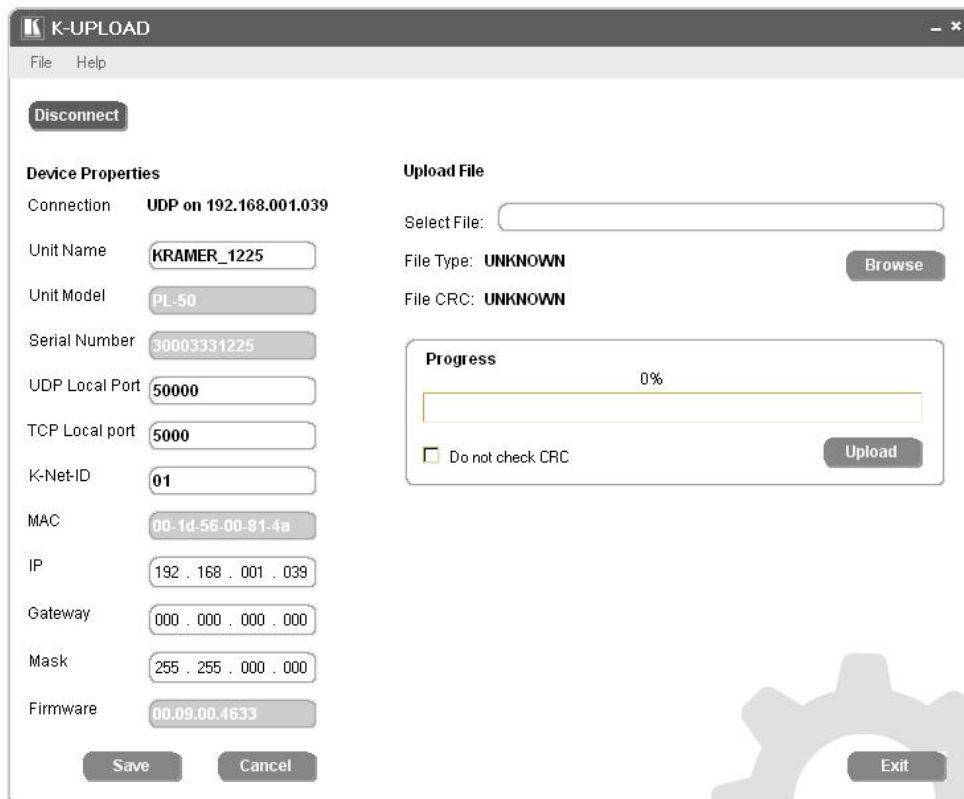


Figure 4: Save Device Properties

- If required, you can change the device properties data and then click the **Save** button to save the changes, or click **Cancel** to cancel the changes (The Cancel button is actually a refresh button that reads the device properties data).

4 Kramer Package Upload Process

You can upload any of the following files:

- **KFW, KFWS** : Firmware binary file
- **RBF**: FPGA binary file
- **MF, MFS**: Memory File
- **KPT**: the Kramer Package that includes one or more files to upload to a specific unit

You can also upload other files or add them to the **KPT** package; these files will upload via the **LOAD** command only if recognized by K-UPLOAD.

4.1 Upload a Kramer Package File

In the following example, a package file is used to upgrade the Kramer **PL-50** machine:

1. Click the **Browse** button to select the package file (or, if required, a single file).
The Open window appears:

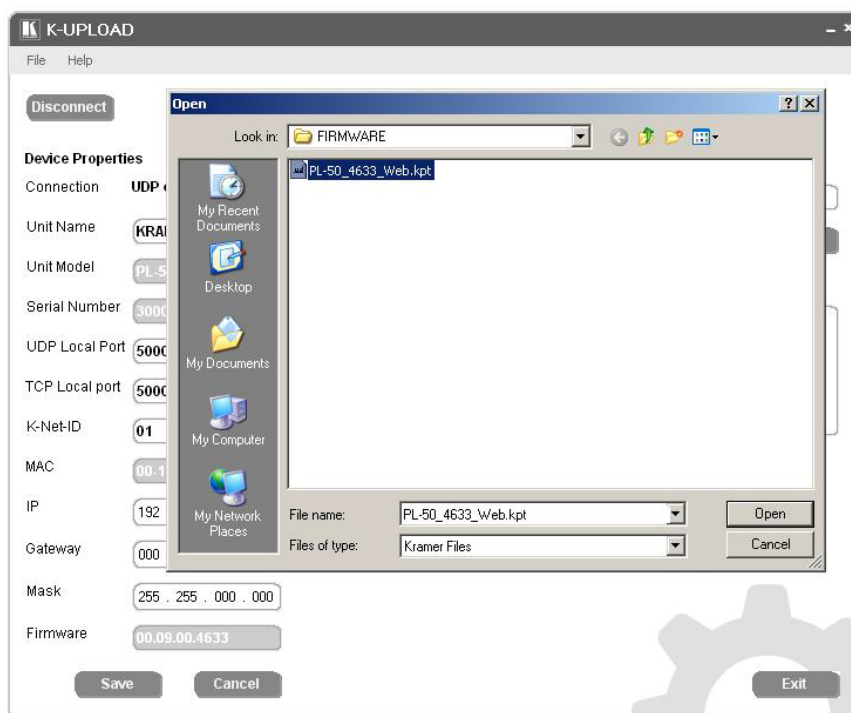


Figure 5: Select a Package File

2. Select a package file (for example, PL-50_4633_Web.kpt, downloaded from our Web site at www.kramerelectronics.com) and click Open.
This package file includes 37 files.

Note that you can upload each of the files separately, but to avoid file version problems, it is recommended to use the package file

The selected file appears in the Select File area (the program recognizes the file type and is ready to upload it).

Check the “Do not check CRC” box if you want to force file upload.

Otherwise, if the same version is already running on the device, K-UPLOAD will check the current version with the new one: if the current version is the same as the new one, it will not upload that specific file; if the current version is different (older or newer), the new version will be uploaded.

3. Click Upload to upload the files.
The following message appears:

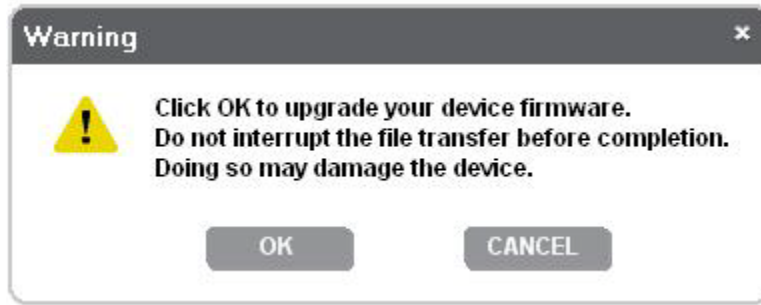


Figure 6: Device Upgrade Message

4. Click OK to start the upload process.



Figure 7: File Upload

The Upload area shows the file upload progress (which file number is uploaded of the total number of files. For example, 3 files of 37) and the uploaded file status (for example, Sending (29%)):

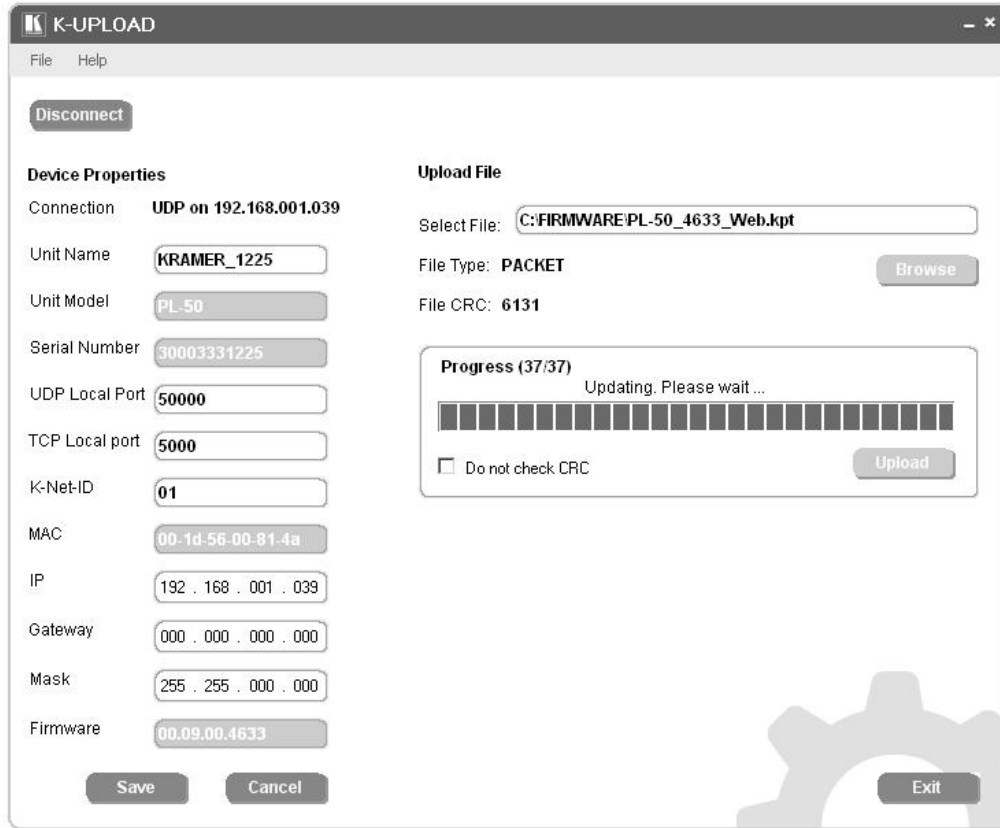


Figure 8: File Upload Progress

5. Upon completion of this process, you will be asked to restart the unit. Click Restart now:

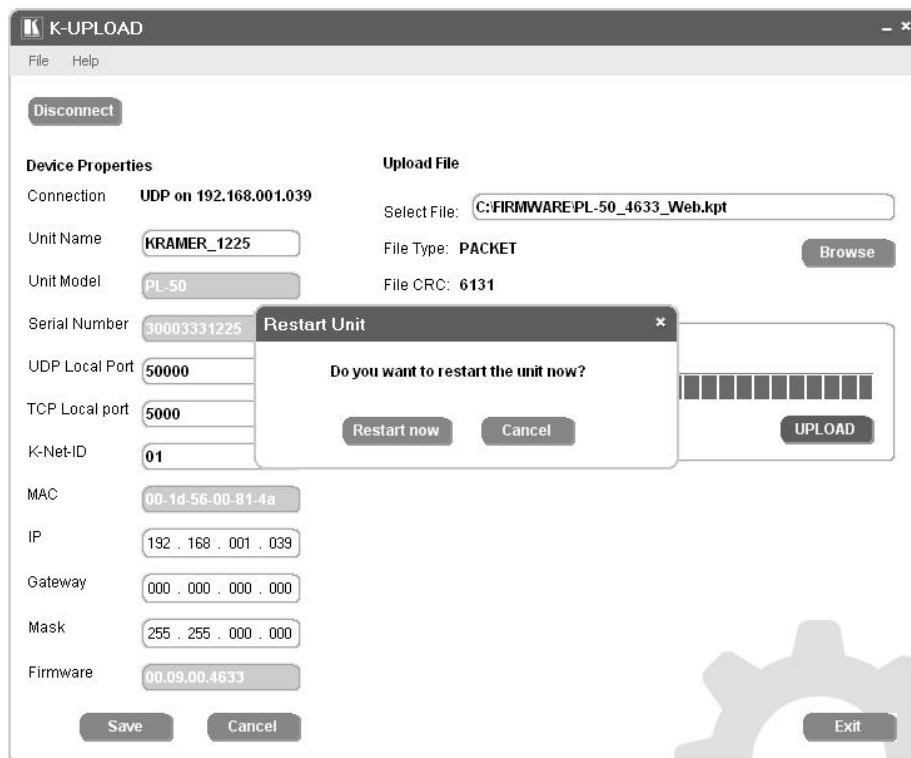


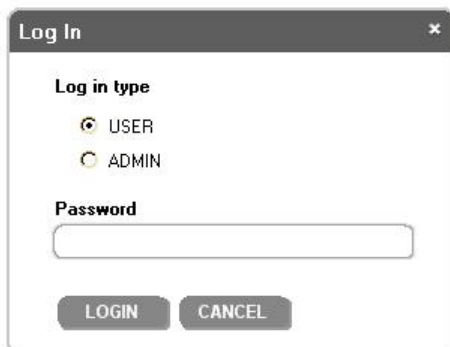
Figure 9: Restart the Unit

The machine will restart and then power up.
When the restart process is complete, the unit is updated.

5 System Security

K-Upload can be security disabled or enabled:

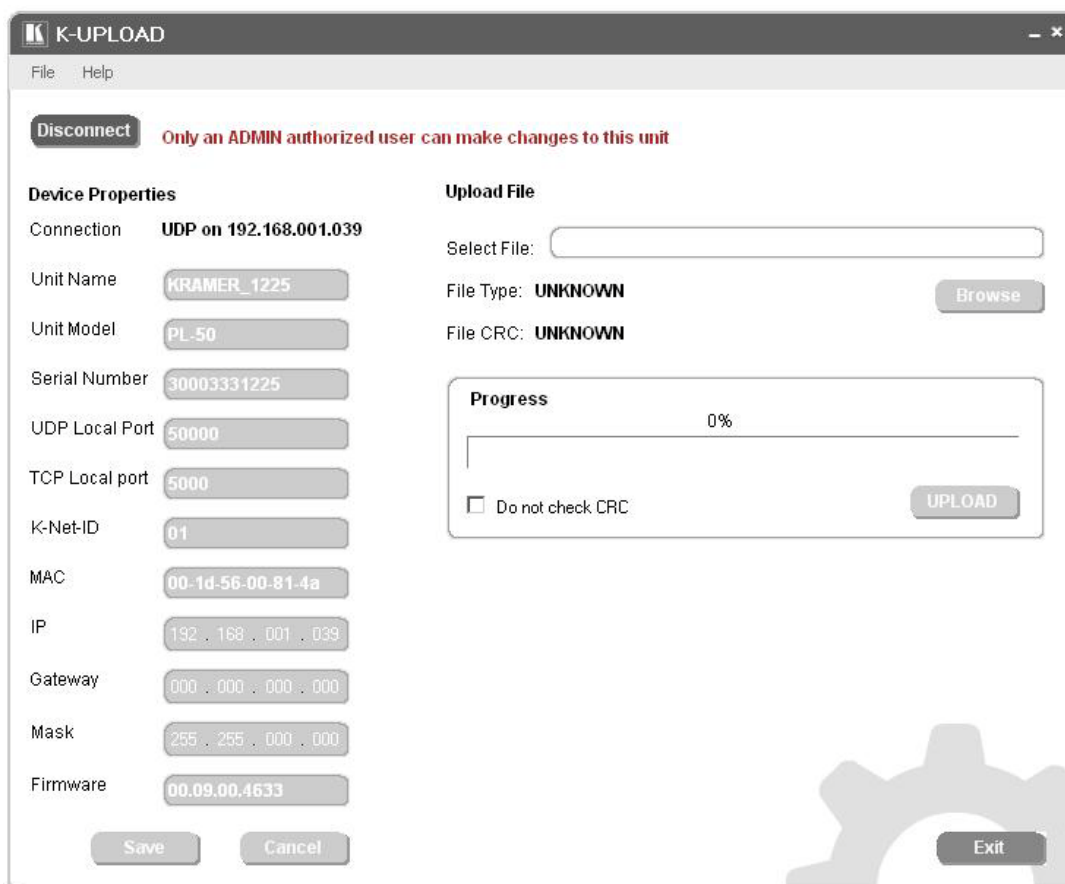
- If the system is security disabled, the upload process can be carried out without using any password
- If the system is security enabled (by the administrator), you can enter K-Upload as a User or Administrator (password is required)



The image shows a 'Log In' dialog box with a title bar containing a close button. Inside the dialog, there is a section titled 'Log in type' with two radio button options: 'USER' (which is selected) and 'ADMIN'. Below this is a 'Password' label followed by an empty text input field. At the bottom of the dialog are two buttons: 'LOGIN' and 'CANCEL'.

Figure 10: K-Upload Log-in

When logging in as an administrator (ADMIN) you can upload new firmware and change the device properties. When logging in as a user (USER) you can connect to the machine to view the device properties but cannot change them or upload any files:



The image shows the 'K-UPLOAD' application window. The title bar says 'K-UPLOAD' and has standard window controls. Below the title bar is a menu bar with 'File' and 'Help'. A 'Disconnect' button is visible on the left. A red warning message reads: 'Only an ADMIN authorized user can make changes to this unit'. The main area is divided into two columns. The left column is titled 'Device Properties' and contains several fields with their values: Connection (UDP on 192.168.001.039), Unit Name (KRAMER_1225), Unit Model (PL_50), Serial Number (30003331225), UDP Local Port (50000), TCP Local port (5000), K-Net-ID (01), MAC (00-1d-56-00-81-4a), IP (192 . 168 . 001 . 039), Gateway (000 . 000 . 000 . 000), Mask (255 . 255 . 000 . 000), and Firmware (00.09.00.4633). At the bottom of this column are 'Save' and 'Cancel' buttons. The right column is titled 'Upload File' and contains a 'Select File:' label with an empty text box, a 'Browse' button, 'File Type: UNKNOWN', and 'File CRC: UNKNOWN'. Below this is a 'Progress' section with a progress bar at 0% and a checkbox labeled 'Do not check CRC'. An 'UPLOAD' button is at the bottom right of the progress section. At the bottom right of the entire window is an 'Exit' button. A large gear icon is visible in the bottom right corner of the window.

Figure 11: User Enabled Screen