

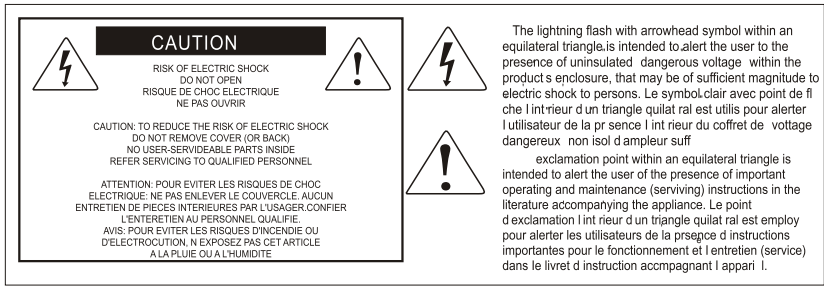


U·Solo

USB2.0 High-Speed

1 Mic-In / 1 Instrument-In, 2 Out professional recording USB interface.





Important Safety Instructions

1. Read this manual thoroughly before using this unit.
2. Keep this manual for future reference.
3. Take notice of and comply with all warnings included in the user's manual or indicated on the appliance.
4. Follow all instructions included in this manual.
5. Do not expose this unit to rain or moisture. Avoid having water or other liquids spilled on this unit.
6. When cleaning the cabinet or other parts of this appliance, use only a dry or slightly damp soft cloth.
7. Do not block any ventilation openings or interfere with the proper ventilation of this unit. Install in accordance with the manufacturer's instructions.
8. Do not use or store near any heat sources such as radiators, heat registers, stoves, or other heat-producing appliances.
9. To avoid the risk of electrical shock, do not touch any exposed wiring while the unit is in operation.
10. Only use attachments/accessories specified by the manufacturer.
11. Unplug this unit and all connected electrical equipment during lightning storms or when left unused a long period of time.
12. Refer all servicing to qualified service personnel. Servicing is required when the appliance has been damaged in any way or fails to operate normally.

WARNING: To reduce the risk of fire or electric shock, do not expose this unit to rain or moisture

Contents

Introduction.....	4
What's in the package?	4
Register your ICON ProAudio product to your personal account	5
Features	6
Front Panel	8
Rear Panel.....	9
Top Panel.....	10
Mac driver installation.....	11
Install Pro Driver 4 with LoopBack function.....	11
Mixer control panel(Mac).....	15
Windows driver installation.....	17
ProDriver4	20
Mixer control panel(Windows).....	21
Settings (Sample rate and latency settings).....	24
ProDriver hosting rack (Mac/Windows)	28
Hardware Connections.....	36
Different types of microphone connection method diagram	37
Specifications	38
Services.....	39

Introduction

Firstly, congratulations on your purchase of the ICON Pro Audio USolo digital audio Interface! In these pages, you'll find a detailed description of the features of the USolo digital audio Interface, as well as a guided tour through its front, top and rear panels, step-by-step instructions for their setup and use and a full list of specifications.

As with most electronic devices, we strongly recommend you retain the original packaging. In the unlikely event that the product is returned for servicing, the original packaging (or reasonable equivalent) is required. With proper care and adequate air circulation, your USolo digital audio interface will operate flawlessly for many years to come.

We trust that this product will provide years of excellent service and in the unlikely event that your product does not perform to the highest standard, every effort will be made to address the issue.

What's in the package?

- USolo USB Recording Interface
- Quick Start Guide x 1
- USB 2.0 cable (Type C) x 1



Register your ICON ProAudio product to your personal account

1. Check serial number of your device

Please go to [http:// iconproaudio.com/registration](http://iconproaudio.com/registration) or scan the QR code below.



Input your device's serial number and the other information on the screen. Click "Submit".

A message will pop up showing your device information such as model name and its serial number - Click "Register this device to my account" or if you see any other message, please contact our after-sales service team

2. Log in to your personal account page for existing users or sign up as for new user

Existing users: Please log into your personal user page by inputting your user name and password.

New users: Please click "Sign Up" and fill in all the information.

3. Download all useful materials

All your registered devices under your account will show on the page. Each product will be listed along with all its available files such as drivers, firmware, user manuals in different languages and bundled software etc. for download. Please make sure you have downloaded the necessary files such as the driver before you begin device installation.

Features



Affordable, dependable and robust – your new USolo recording interface will provide rock solid performance for years to come. Suitable for the entry level recordist and experienced studio producer alike, the ICON Pro Audio USolo USB recording interface provides quality audio inputs and outputs. At the time of writing, no other audio interface in the price range offers such high quality audio, (24-Bit 192KHz sample rate). Put simply, the Icon Pro USolo offers unbeatable value for money.

The main features include:

- 24-Bit 192KHz 1 mic-In, 2-Out USB Recording Interface
- Supports Mac/PC or iOS/Android connectivity operation
- Live sessions possible with audio signal processing via ProDriver4 virtual plug-in rack
- 2x2 analog I/O full duplex recording and playback
- For direct connection with smartphone, tablet or other device
- Mic/Instrument preamps with individual gain control and phantom power switch
- 2 analog outputs on 1/4" TRS jacks
- 1 headphone output with assignable source and individual volume control
- Flexible channel routing via the ProDriver4 software control panel
- ICON Pro Audio developed ultra low latency ProDriver4™ driver
- ICON Pro Audio innovative and user-friendly plug-in hosting rack software with ProDriver4™ (Windows and Mac)
- USB 2.0 High Speed and USB bus-powered functionality
- Supports DirectSound, WDM and ASIO 2.0
- LoopBack function is equipped with ProDriver 4™ for both Mac and Windows platforms
- Compatible with mac OS (M1/ Intel Mac) 10.11 and later, iOS 9 or above, Android and Windows 7, 8 & 10 (32-bit/64-bit)
- Full duplex, simultaneous record/playback
- +5VDC power supply connector is equipped for external power supply when using with iOS

- Bitwig 8Track included*
- Dotec audio plugins included*
- Tracktion DAW Essentials Collection included*
- Kilohearts Toolbox plugins included*
- Harrison 32c Vocal Intensity Processor plugin included*

**Please sign up for an account on www.iconproaudio.com and register your device. Your free software will be available in your user area, (click on the 'graphic' of the device)*

Front Panel



1. Master volume

The master level control will adjust the output level of the line outputs (L and R)

2. Input gain level control (Microphone)

This potentiometer controls the input level of the analog microphone input.

3. 3-pin XLR (Balanced) – For condenser microphones with +48V phantom power or dynamic microphones.

Please refer to P.36 for the connection method of different types of microphones and instruments..

4. Headphone output

This output jack accepts a standard 1/4" stereo TRS headphone connector.

5. Headphone level control

This potentiometer controls the output level of the headphone output.

Rear Panel



1. Power supply connector (USB Type C)

The USolo is USB-bus powered. If your computer does not supply sufficient power, connect an ICON 5VDC power supply adapter to this jack. Alternatively, you may try to use your smart phone power adapter with the correct cable type (USB Type C). Normally it should work and provide enough power to the device.

(Note: You may purchase the power adapter from ICON distributors/dealers near you)

(Note: An external power adapter is needed if the USolo is used as a standalone unit without a Mac or PC)

2. USB 2.0 connector (Type C)

Connect this port with the 'Type C' USB cable provided to your Mac/PC or your iOS device camera kit's USB connector. Your Mac/PC must have a USB2.0 connector in order to run the full speed of the USolo.

3. Stereo output L/R

This is an unbalanced analog output on a standard 3.5mm stereo connector. This output jack accepts a standard 1/4" stereo TRS headphone connector.

Top Panel



1. Mic/Inst Button

Press the Mic/Inst button to switch between a Mic and Instrument.

2. +48 Phantom Power

Press to supply +48V phantom power to the associated XLR input. This phantom power circuit is suitable for most condenser microphones.

Mac driver installation

The USolo is a class compliant device. Therefore, no driver installation is needed for the Mac. Additionally, it fully supports iOS devices by connecting the unit to a camera kit.

Install Pro Driver 4 with LoopBack function

1. Download Pro Driver 4 (Mac) from your "Personal User Portal" page for your audio interface.
(Please refer to P.5 "register your ICON Pro Audio product to your personal account" for creating your personal user portal)
2. Double click the file "ProDriver-OSX-xxx.dmg" that you just downloaded from your Personal User Portal

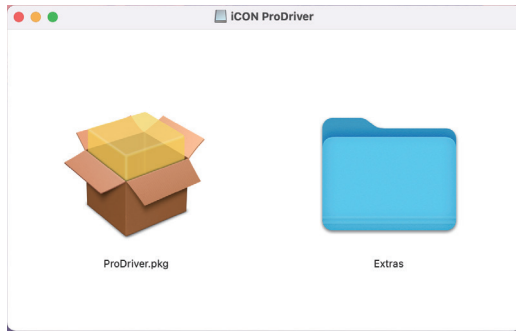


Diagram 1

3. Double click "ProDriver.pkg" to start the Pro Driver installation

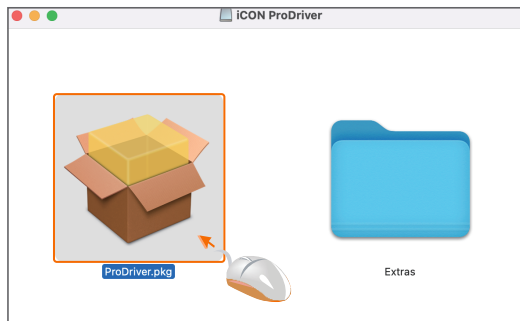


Diagram 2

4. Click "Continue"

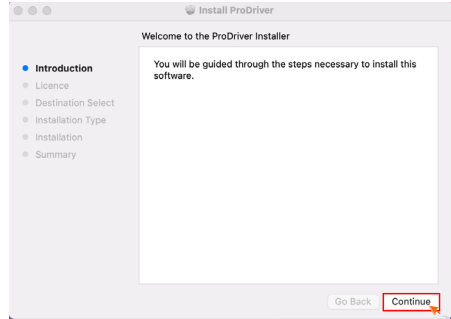


Diagram 3

5. Click "Continue"

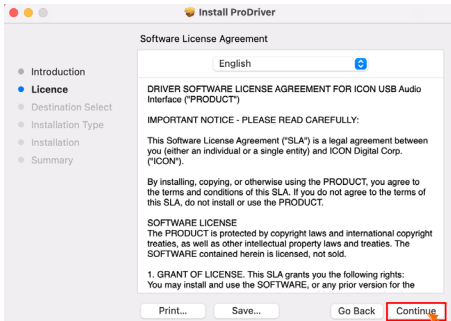


Diagram 4

6. Click "Read License" to read the license terms or click "Agree" to start the installation

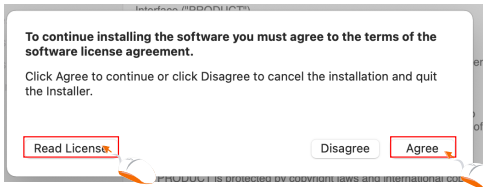


Diagram 5

7. Select the disk where you would like ProDriver to be installed and then click "Continue"

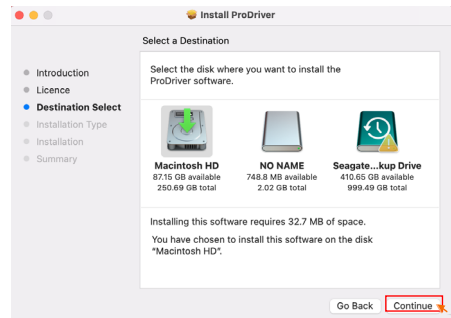


Diagram 6

8. Click "Install"

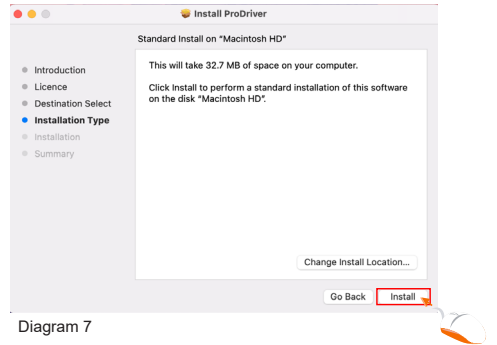


Diagram 7

9. Input your password or tap your finger-print to start the installation.

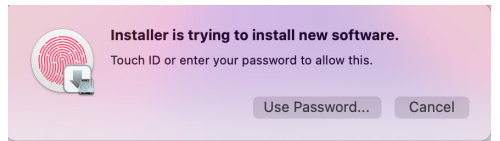


Diagram 8

10. Installation will now start. Click "Close" after it has completed.

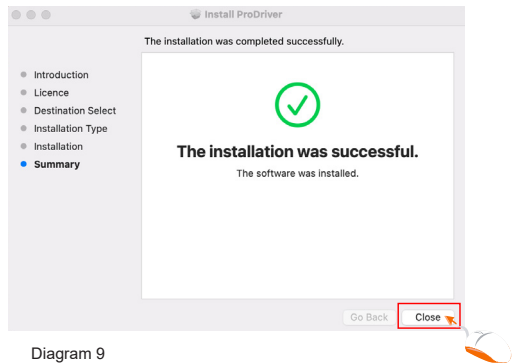


Diagram 9

11. At this stage, please connect your audio interface to your Mac and then click the ICON logo as shown.



Diagram 10

12. Select your audio interface model from the list and click "Select"

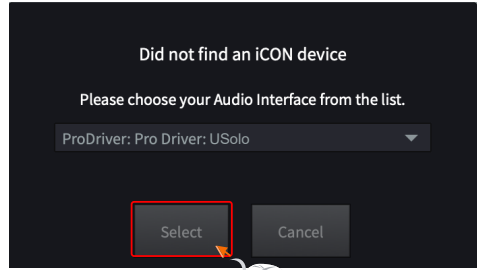


Diagram 11

13. Click "OK" to allow ProDriver to access the microphones.



Diagram 12

14. The ProDriver activated logo will appear on your desktop. Click it to launch the ProDriver control panel.



Diagram 13

15. Audio MIDI setup

Open the "Audio MIDI setup" window and confirm that the USolo device has been set up properly as shown in diagram 14.

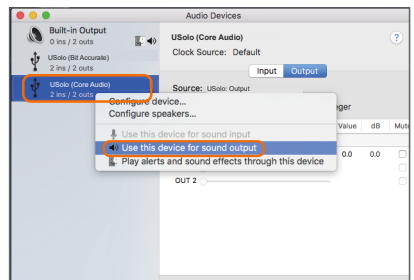


Diagram 14

Mixer control panel(Mac)

The mixers work like a matrix mixer. Activate and adjust the corresponding input or output channel level. They are very useful and make your inputs and outputs very flexible. You may route any of your input(s) to any output(s).

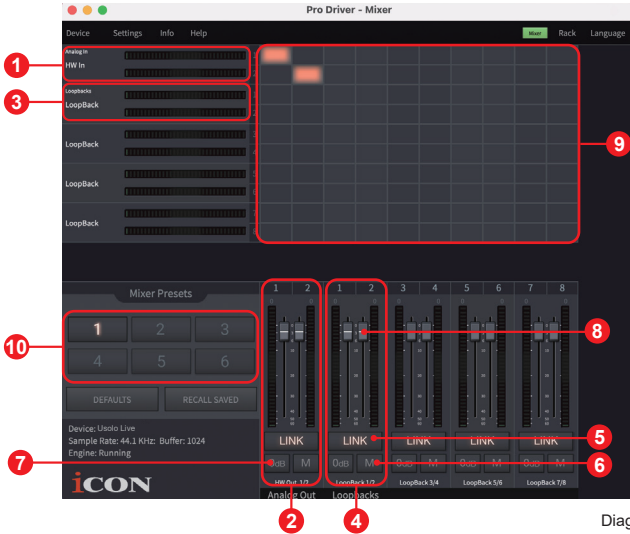


Diagram 15

- 1. HW In 1/2 level metering**
Shows the hardware 1/2 input level. (HW In 1/2).
- 2. HW Out 1/2 level metering**
Shows the hardware 1/2 output level. (HW Out 1/2).
- 3. LoopBack In 1-8 level metering**
Show the LoopBack 1/2, 3/4, 5/6 & 7/8 input level.
- 4. LoopBack Out 1-8 level metering**
Show the LoopBack 1/2, 3/4, 5/6 & 7/8 output level.
- 5. Link switch**
Switch to adjust both channels' levels simultaneously.
- 6. Mute switch**
Switch to mute the corresponding channel.
- 7. “0dB” switch**
Switch to instantly adjust the corresponding channel to “0dB” level.
- 8. Gain control fader**
Slide to adjust the gain level for the corresponding channel.
- 9. Inputs & Outputs Matrix switches**
Switch to turn On/Off the corresponding input channel route to the corresponding output channel. Remember, you may route any input(s) to any output(s).
- 10. Mixer Presets**
6 Mixer-Preset button slots are AVAILABLE for saving or loading your routing channel settings.

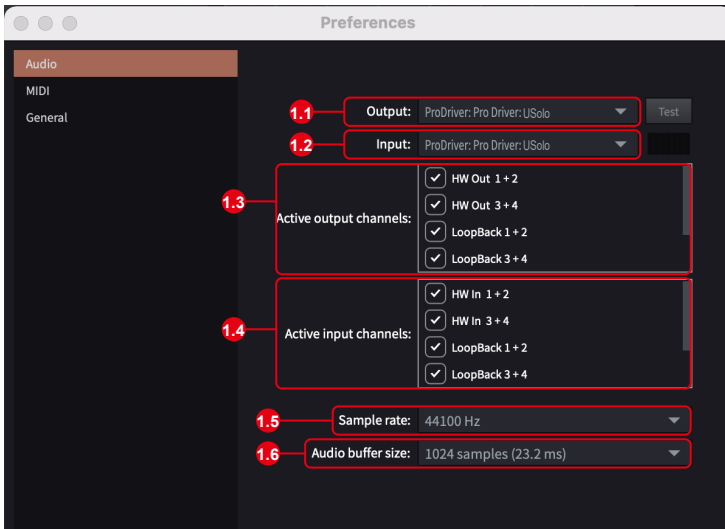


Diagram 16

11. Device Preferences

Click "Device" at the top menu bar to launch the "Preferences" window.

11.1 Output

Select your audio interface as your output device

11.2 Input

Select your audio interface as your input device

11.3 Active output channels

Showing you all the available and active output channels for your audio interface

11.4 Active input channels

Showing you all the available and active input channels for your audio interface

11.5 Sample rate

Select your desired sample rate from the list

11.6 Audio buffer size

Select your desired audio buffer size from the list

(Note: If a clicking sound occurs, you should change to a larger buffer size in the settings. If the largest buffer size has been selected and there is still a clicking sound, it means your computer performance is not able to handle the task. (It is not caused by the USolo digital audio interface.)

Windows driver installation

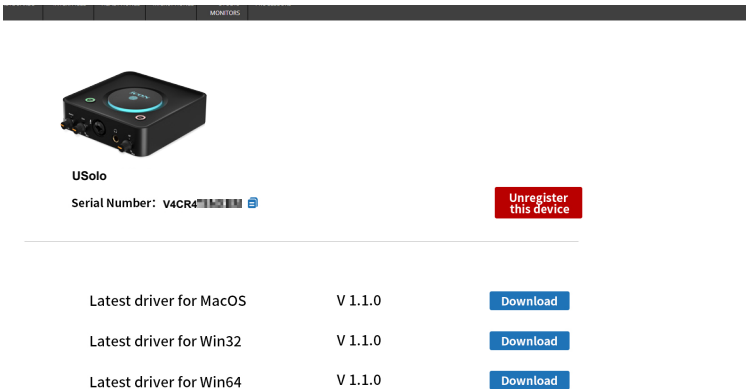
Please follow the step-by-step procedures below to install your USolo USB recording interface and its driver.

1. Turn on your computer

Note: Do not connect the USolo digital audio interface to your computer yet.

2. Download the Windows driver from your User Center Page at www.iconproaudio.com (Please refer to P.5 "Register your ICON Pro Audio product to your personal account" for creating your personal user portal)

After you downloaded the driver file, please click it to start the installation process.



The screenshot shows the user center page for the USolo device. At the top, there is a navigation bar with the word "MONITOR" visible. Below it is a product image of the USolo device. Under the image, the text "USolo" and "Serial Number: V4CR4" are displayed. To the right of the serial number is a red button that says "Unregister this device". Below this, there is a table of download links for the latest drivers for MacOS, Win32, and Win64, each with a corresponding "Download" button.

Latest driver for MacOS	V 1.1.0	Download
Latest driver for Win32	V 1.1.0	Download
Latest driver for Win64	V 1.1.0	Download

Diagram 17

3. Installation Wizard appears

Choose "Next" when you see the Welcome Screen shown in Diagram 18.

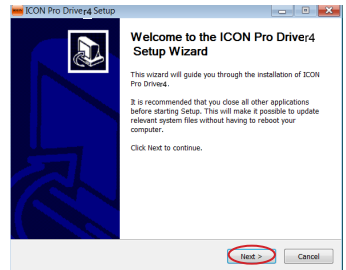


Diagram 18

4. License Agreement

Click "I Agree" to proceed.

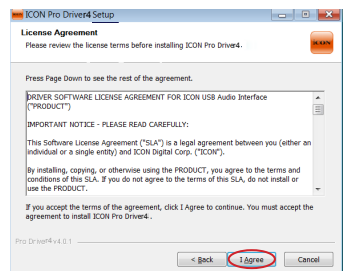


Diagram 19

5. Select components for installation

Check the components that you would like to install. We strongly recommend that you select all components.

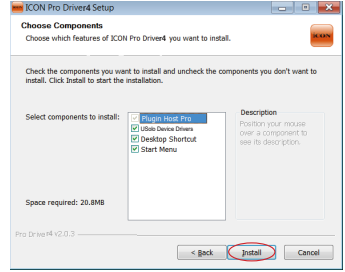


Diagram 20

6. Preparing installation files

Once the installation process has started, the process may take some time depending on your computer performance. Please be patient and wait for the process to finish.

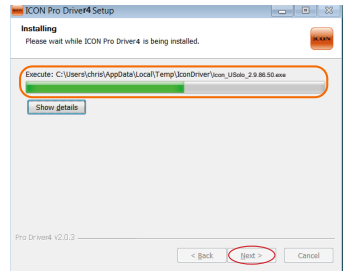


Diagram 21

7. Click “Install” to proceed.

Note: The same message will appear three times as there are three different driver installations.

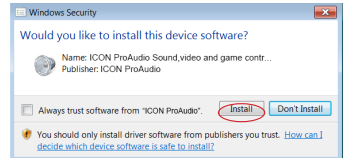


Diagram 22

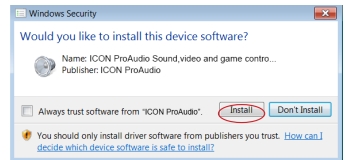


Diagram 23

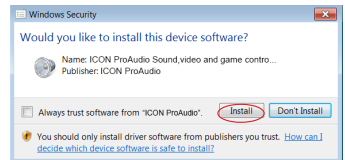


Diagram 24

8. Setup completed

A window as shown in Diagram 25 should appear. Choose "Finish".

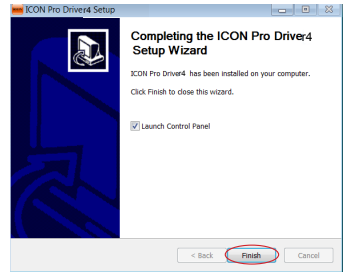


Diagram 25

9. Launch the software control panel

You may click the ICON ProAudio logo on the system tray to launch the software control panel (Page 20).

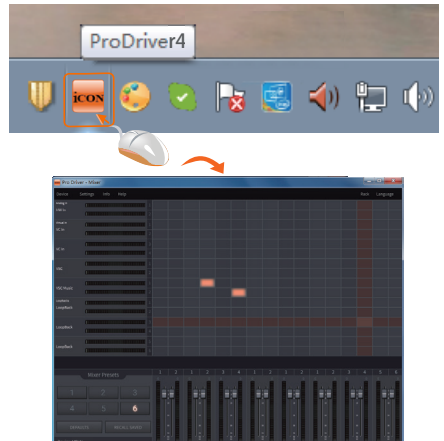


Diagram 26

10. Connect your USolo digital audio interface

Now connect the USolo digital audio interface to your computer's USB port.



Diagram 27

ProDriver4

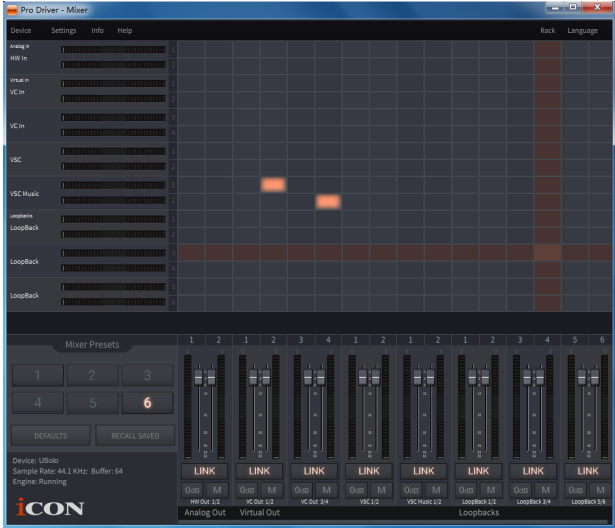


Diagram 28



Diagram 29

Introducing ProDriver4, the leading edge in audio innovation for stage, studio and streaming from ICON Pro Audio. The Pro Driver audio system supplies you with the most reliable tools for almost any audio application - in the moment - right when you need them. The heart of the system is our driver, employing breakthrough technology and zero latency monitoring. The user interface makes it easy to grab, route and re-direct audio from any source in your computer with our virtual signal router. Use the Pro Driver Plugin Host to connect your favorite VST, Audio Units and Direct X plugins. Run ProDriver4 in standalone mode or with your favorite DAW. Save your favorite plugin chains as presets and recall them during your session or live on stage in real time.

Mixer control panel(Windows)

There are two different audio drivers including “WDM” (Windows Driver Model) and “ASIO” (Audio Stream Input and Output) within the ICON Pro Audio interface driver. WDM is widely used for daily software such as media player and ASIO is mainly used for most recording software such as Logic Pro. The advantage of ASIO is that it has much lower latency than WDM and this is very important when you are recording with a heavy plugin load. Actually, most of the daily software does not support ASIO drivers and uses WDM only. In this case you just simply need to use the HW channel (Hardware channels). Below please find some explanations on different terminology for each channel type.

1. HW IN (Hardware Channel IN)

This means the hardware input channels including the microphones or internal input channels

2. HW Out (Hardware Channel OUT)

This means the hardware output channels including the headphone or line out output channels

3. VC Out (Virtual Channel OUT)

This only exists on ASIO driver and it is a virtual channel that's output signal goes to ASIO VC IN

4. VC In (Virtual Channel IN)

This only exists on ASIO driver and it is a virtual channel that's input signal is coming from ASIO VC Out

5. LoopBack (LoopBack Channel)

ASIO internal loopback channel (e.g. ASIO VC Out signal goes to ASIO VC IN)

On the mixer control panel, there are four different types of ASIO channels that you can manipulate.

1. USolo Hardware channels (HW In 1/2 & HW Out 1/2)

These are the hardware input and output channels on the USolo .

2. USolo Virtual channels (VC In 1/2, 3/4 and 5/6), (VC Out 1/2, 3/4 and 5/6)

These are the input and output virtual channels that relate to the WDM.

For example: WDM Out 1/2 linked to VC In1/2

VC Out1/2 linked to WDM In1/2

3. USolo Loopback channels (LB 1/2, 3/4 and 5/6)

These are the ASIO loop-back channels.

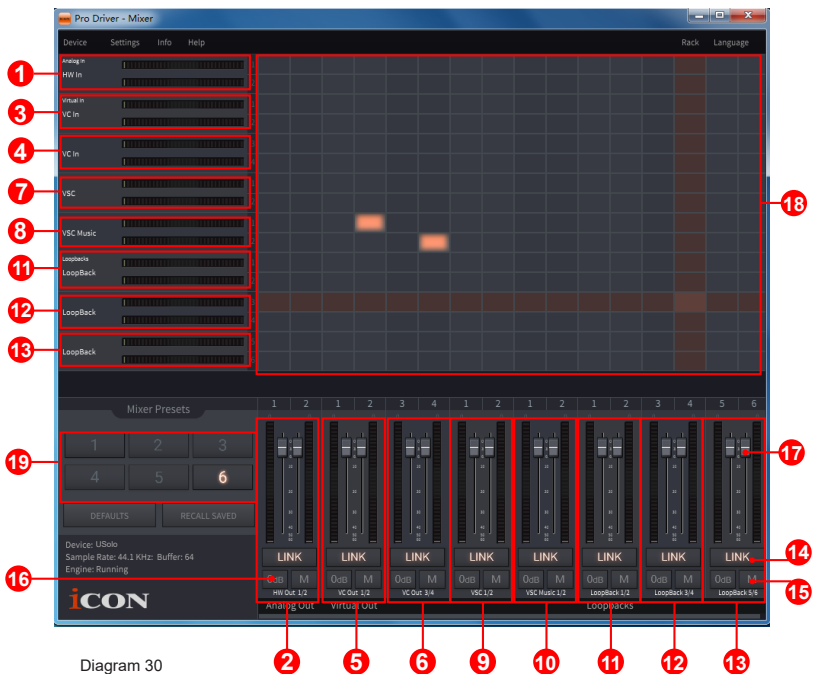


Diagram 30

By activating different cross points, you may route the corresponding signal to your desired channels.

1. **HW Input 1/2 level metering**
Showing the hardware 1/2 input level (HW In 1/2).
2. **HW Output 1/2 level metering**
Showing the hardware 1/2 output level (HW Out 1/2).
3. **VC In 1/2 (Virtual) input level metering**
Showing the WDM 1/2 output level (VC In 1/2).
4. **VC In 3/4 (Virtual) input level metering**
Showing the WDM 3/4 output level (VC In 3/4).
5. **VC Out 1/2 (Virtual) output level metering**
Showing the ASIO 1/2 VC output level (VC Out 1/2).
6. **VC Out 3/4 (Virtual) output level metering**
Showing the ASIO 3/4 VC output level (VC Out 3/4).
7. **VSC In 1/2 (Virtual) input level metering**
Showing the WDM 1/2 output level (VSC In 1/2).

8. VSC Music In 1/2 (Virtual) input level metering

Showing the WDM 1/2 output level (VSC music In 1/2).

9. VSC Out 1/2 (Virtual) output level metering

Showing the ASIO 1/2 VC output level (VSC Out 1/2).

10. VSC Music Out 1/2 (Virtual) output level metering

Showing the ASIO 1/2 VC output level (VSC music Out 1/2).

11. Loopback 1/2

Showing the ASIO loop-back 1/2 channel's level metering.

12. Loopback 3/4

Showing the ASIO loop-back 3/4 channel's level metering.

13. Loopback 5/6

Showing the ASIO loop-back 5/6 channel's level metering.

14. Link switch

Switch to adjust both channels level simultaneously.

15. Mute switch

Switch to mute the corresponding channel.

16. "0dB" switch

Switch to instantly adjust the corresponding channel to "0dB" level.

17. Gain control fader

Slide to adjust the gain level for the corresponding channel.

18. Inputs & Outputs Matrix switches

Switch to turn On/Off the corresponding input channel route to the corresponding output channel. The matrix is very useful and makes your inputs and outputs very flexible. You may route any of your input(s) to any output(s).

19. Mixer Presets

6 Mixer-Presets button slots are available for saving or loading your routing channel settings.

Settings (Sample rate and latency settings)

Click the “Setting” button to launch the settings window.

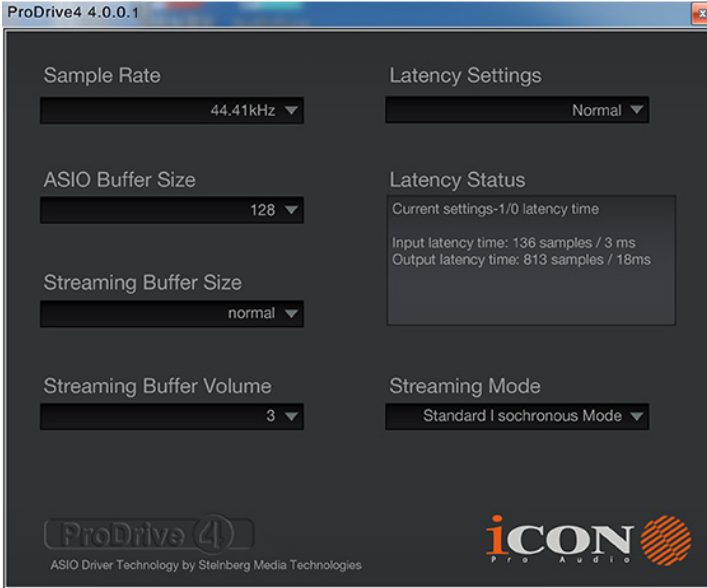


Diagram 31

Sample rate setting

Select your desired sampling rate from 44.1KHz to 192KHz on the pull down window shown in Diagram 32.

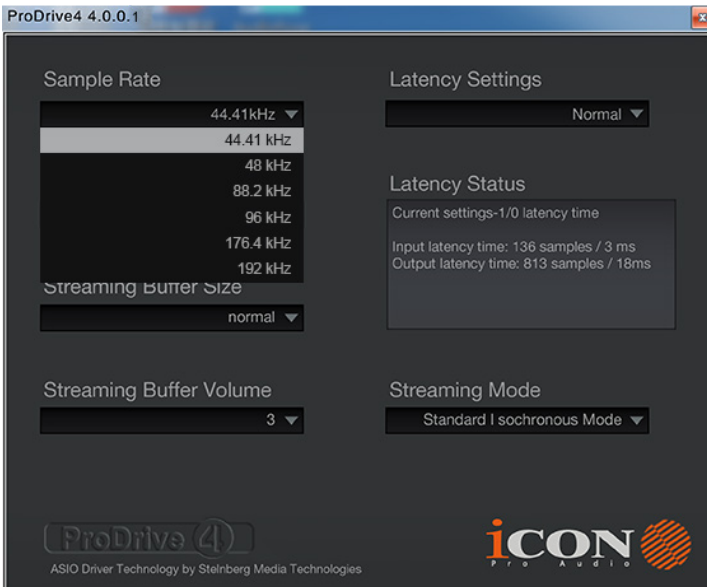


Diagram 32

Latency settings

There are six standard latency settings to select. If you would like to customize your own latency value, select custom.

- Safe (maximum latency)
- Extra Large
- Normal
- Small
- Very Small
- Minimum (minimum latency)
- Custom

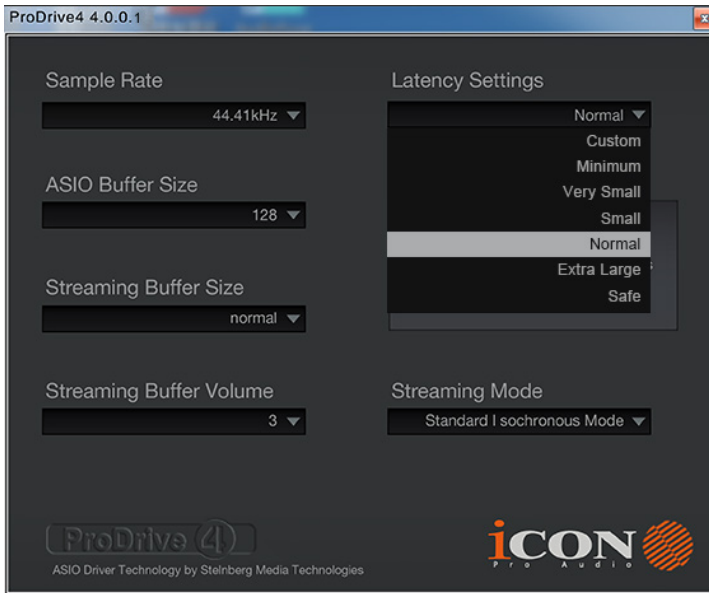


Diagram 33

There are three different settings you can adjust to customize your own latency settings: These values include:

1. ASIO buffer Size

You may adjust the value ranging from 32/64/128/256/512/1024/2048 and 4096.

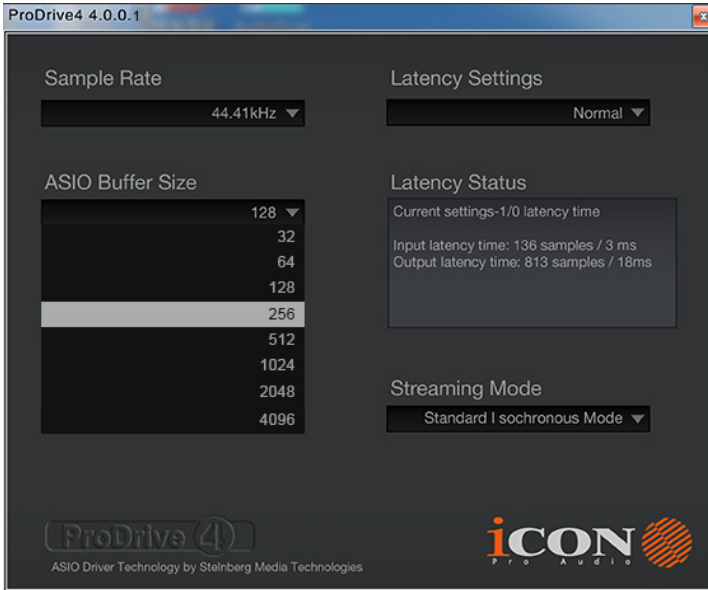


Diagram 34

2. Streaming buffer Size

Adjustable settings: Minimum/Low/Normal/High and Maximum.

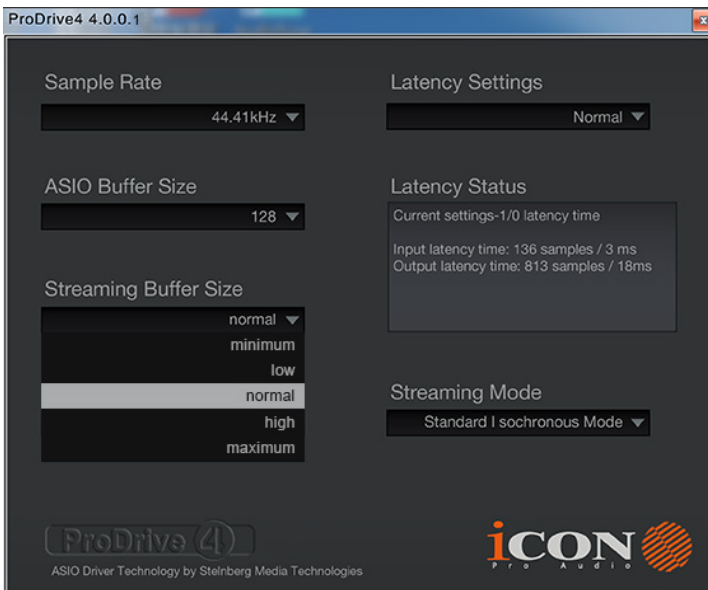


Diagram 35

3. Streaming buffer volume

Adjustable values: 2/3 and 4.

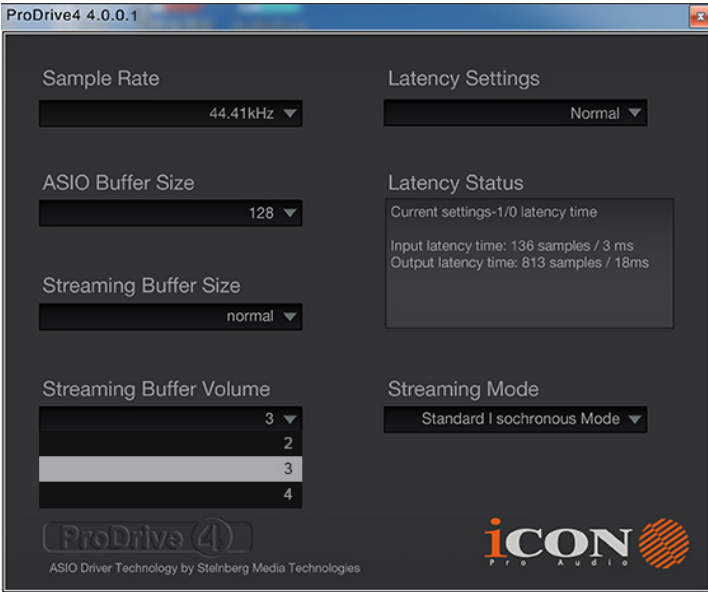


Diagram 36

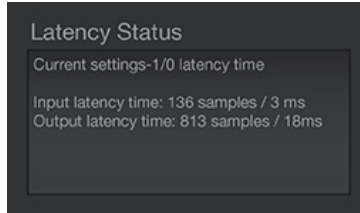


Diagram 37

(Note: If a warning message appears on the “Latency Status” windows, please select a larger latency setting.)

(Note: If a clicking sound occurs, you should change to a larger buffer size for the settings. If the largest buffer size has been selected and there is still a clicking sound. It means your computer performance is not able to handle the task. (It is not caused by USolo digital audio interface.)

ProDriver hosting rack (Mac/Windows)



Diagram 38

With the ProDriver Rack, you can use any of your plug-ins with your DAW. Or you may use your device as standalone plug in effects without the need to run a DAW.

Click the "Rack" button on your ProDriver's mixer panel to launch the Virtual Rack window

Session & Preset

A session could contain unlimited presets. Each preset allows you to insert different plug-ins to create your desired sound effect or application need.

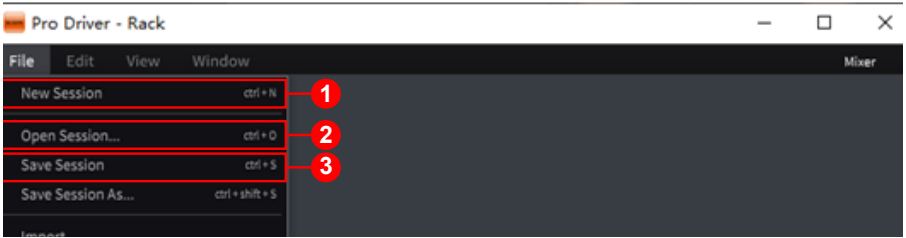


Diagram 39

1、 Create a New Session

Click "New Session" under the "file" tab on the top menu bar. Then click "Save Session" and input file name.

2、 Open a saved Session

Click "Open Session" under the "File" tab on the top menu bar and select the saved session file to open the session.

3、 Save a Session

When you make any changes to your session, you may save it by clicking the "Save Session" function under the "File" tab on the top menu bar. If you would like to save as a new session, click "Save Session As" and input a new session name.

Create a New Preset

Click "New Preset" function under the "Edit" tab on the top menu bar. A new preset slot will create.



Diagram 40

Tip: To rename the preset, click the "Aa" button on the selected preset slot.

Duplicate Current Preset

On occasion, you may like to make small changes to a current preset and compare the two. The function of "Duplicate Current Preset" will allow you to copy the current preset instantly. Then, you may make changes as you wish with one of the preset and make a comparison between the two. Click "Duplicate Current Preset" function on the "Edit" tab on the top menu bar.

Tip: You may duplicate a selected preset by clicking the third button on the right on the selected preset slot.

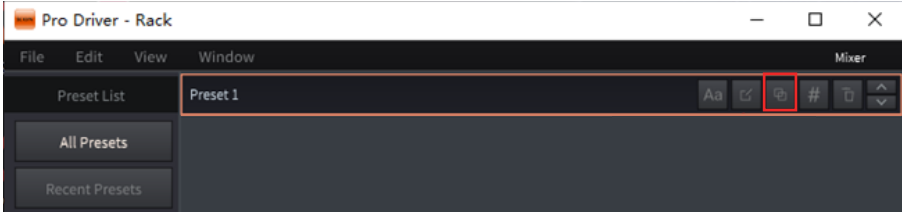


Diagram 41

Delete a Preset

You may delete any preset. Select a preset and click "Delete selected preset" under the "Edit" tab on the top menu bar.

Tip: You may also delete a selected preset by clicking the "Trash" button on the selected preset slot.

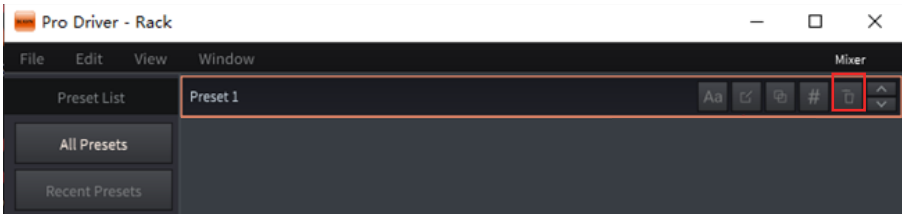


Diagram 42

Grouping a Preset

There are four "Preset Categories" including "Vocal", "Special", "MC" and "Others" that allow you group all your current presets. This is very useful to manage your different presets according to different application such as singing (Vocal), broadcasting (MC) or Guitar (Special) etc. To set a selected preset to a particular category - Click the "#" button in the selected preset slot and click the category from the pull down menu.

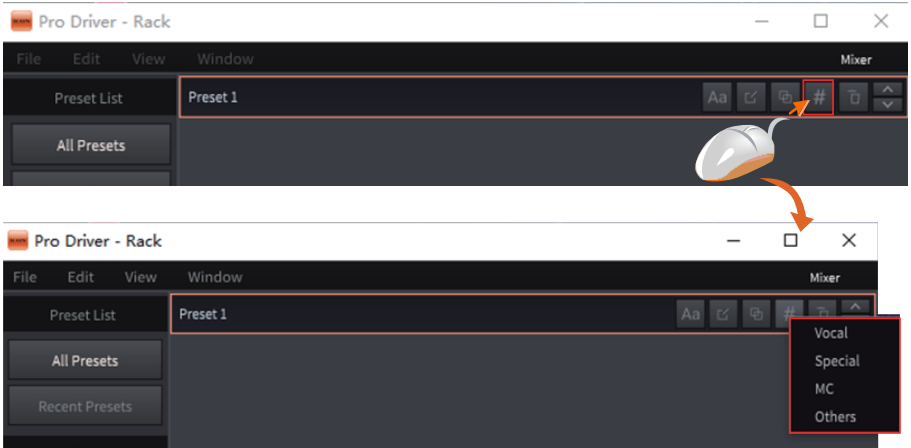


Diagram 43

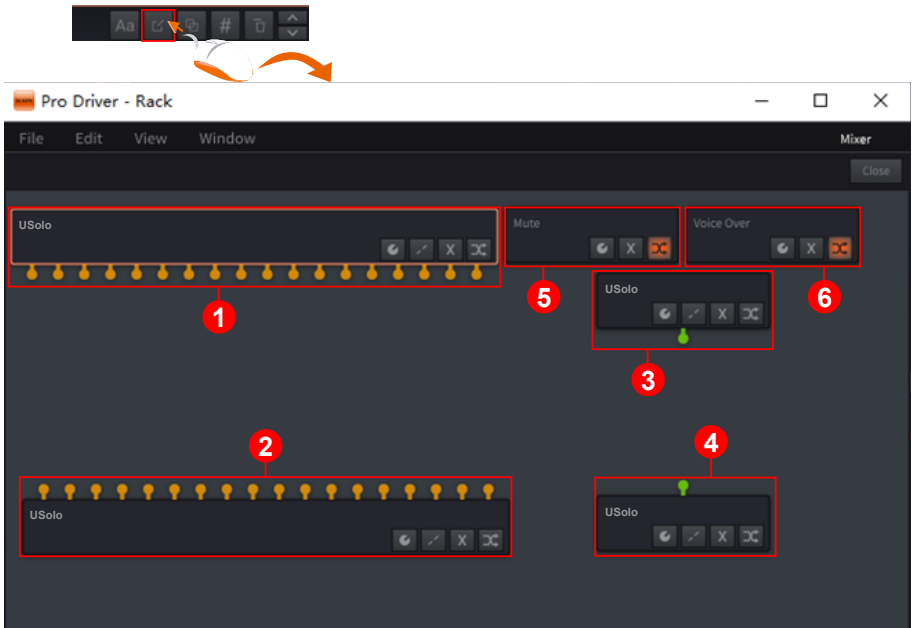


Diagram 44

Edit plug-ins in a preset

Click the "Pencil & Paper" button on the selected preset slot will launch the plug-in rack screen where you would see 6 different routing blocks.

1. ProDriver Input routing block with orange connections

Depending on the number of I/O that your audio interface is equipped with, you will see a number of connections in orange. They are representative of the input channels of the audio interface.

2. ProDriver Output routing block with orange connections

Depending on the number of I/O that your audio interface is equipped with, you will see a number of connections in orange. They are representative of the output channels of the audio interface.

3. ProDriver MIDI Input routing block with green connection

Depending on if your audio interface is equipped with MIDI I/O, you will see a connection in green. This is representative of the MIDI input channel of the audio interface.

4. ProDriver MIDI Output routing block with green connection

Depending on if your audio interface is equipped with MIDI I/O, you will see a connection in green. This is representative of the MIDI output channel of the audio interface.

5. Mute routing block

This is a routing block intended for use with the Mute function. Right clicking the block will launch the plug-in pull-down menu for all the available plug-ins - click the desired plug-in to select. To use the block as a "Mute" function, we have created a small 'activate' shortcut button on the ProDriver floating icon. Simply click the "M" button – this will activate or deactivate the function.

Tip: As well as using this facility as a Mute function, you may consider using this for other functions – please insert a corresponding plugin.



Diagram 45

6. Voice Over routing block

This is a routing block intended for the use of Voice Over function. Right clicking the block will launch the plug-in pull-down menu for all the available plug-ins. Click the desired plug-in to select. We have created a small 'activate' shortcut button on the ProDriver floating icon. Simply click the "V" button to activate or deactivate the function.

Tip: As well as using this facility as a Voiceover function, you may consider using this for other functions – please insert a corresponding plugin

Import all your available plug-ins

To import all your available plug-ins, click "View" tab on the top menu bar and click "Plugin Manager" to launch the Plugin Manager window. Click "Scan VST" or "Scan VST3" to scan your computer all the available corresponding plugins automatically. A list of all available plugins will be shown after they have been imported automatically and ready to be used in ProDriver.

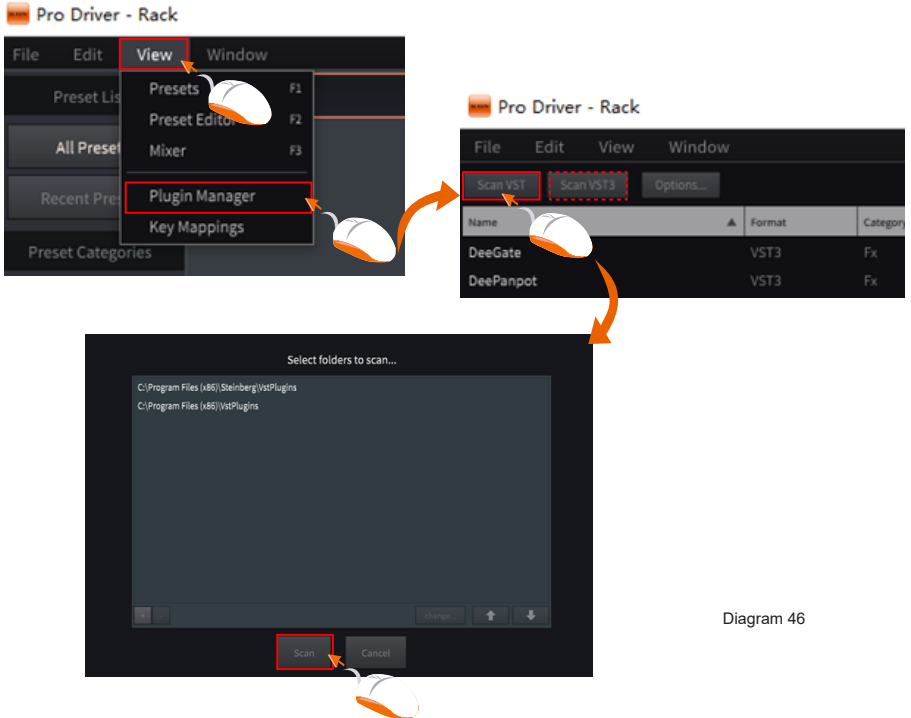


Diagram 46

Add plug-in and make routing

It is extremely easy to add plug-ins and create routing between input channels and output channels. Simply pull & drag the connection cable from connection point to point. To add a plug-in, right click your mouse, you will see all the available plug-ins that you have in your computer in the pull-down menu, then just click the plug-in to select.

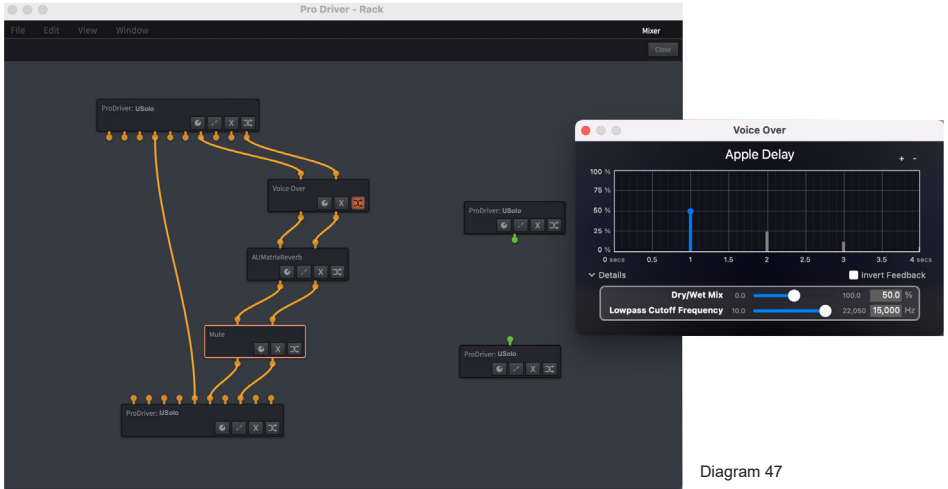


Diagram 47

Buttons

1. Click to launch the plug-in control panel (GUI) to adjust settings.
2. Click to delete all the virtual connections that are connected to the block.
3. Click to delete the routing /plugin block
4. Click to activate or deactivate the routing/plugin block



Diagram 48

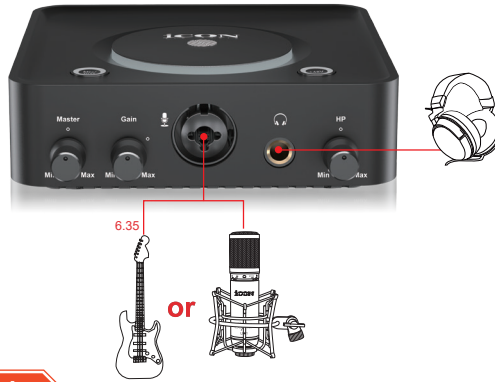
Hardware Connections

Connect the USolo digital audio interface outputs to your amplifier or powered monitors. Ensure the Master volume is set to a suitable volume setting.

If you are monitoring through headphones, connect your headphones to the device's headphone output. Ensure the headphone volume is set at a low volume, to ensure ear safety.

Connect your microphone/guitar to the device's analog input.

Please refer to the diagrams on the following pages.



PC/MAC Only



Smart Device Only



Different types of microphone connection method diagram



Note: For dynamic microphone user, please make sure +48V phantom power switch is "OFF" before you plug in your microphone, otherwise it may cause damage to your microphone.

Specifications

ADC:

Dynamic Range: 98dB, A-weighted
Signal-to-Noise Ratio: -98dB, A-weighted
THD+N Ratio: -90dB, -1dBFS

DAC:

Dynamic Range: 108dB, A-weighted
Signal-to-Noise Ratio:..... -108dB, A-weighted
THD+N Ratio: -91dB, 0dBFS

Mic Input(XLR, Balanced):

Frequency Response: 20Hz to 20kHz (+/-0.1dB)
Noise EIN: <-120dB
Input Impedance:..... 1.8K Ohms
Gain Range: 0dB~+52dB
Maximum Input Level: +9dBu

Instrument Input(6.35mmTRS, Unbalanced):

Frequency Response: 20Hz to 20kHz (+/-0.1dB)
Input Impedance: 390K Ohms, typical
Gain Range: +6dB~+45dB
Maximum Input Level: +9dBu

Line Outputs 1/2 (Stereo, Unbanced):

Frequency Response: 20Hz to 20kHz (+/-0.1dB)
Nominal Output Level: +6dBu, typical
Maximum Output Level:..... +10dBu
Output Impedance:..... 150 Ohms
Load Impedance:..... 600 Ohm minimum

Headphone Outputs: (Stereo, Unbanced)

Frequency Response: 20Hz to 20kHz (+/-1dB)
Maximum Output Level:..... +9dBu, typical
Output Impedance:..... 10 Ohms
Load Impedance:..... 32 to 600 Ohms

Dimensions and Weights

Dimension..... 145mmX130mmX39mm
..... (5.7" X 5.1" X 1.5")
Weight 0.234kg

Services

If your USolo needs servicing, follow these instructions.

Check our online Help Center at <http://support.iconproaudio.com>, for information, knowledge, and downloads such as:

1. FAQ
2. Download
3. Learn More
4. Forum

Very often you will find solutions on these pages. If you don't find a solution, create a support ticket at our online Help Center at the link below, and our technical support team will assist you as soon as we can.

Navigate to <http://support.iconproaudio.com> and then sign in to submit a ticket.

As soon as you have submitted an inquiry ticket, our support team will assist you to resolve the problem with your ICON ProAudio device as soon as possible.

To send defective products for service:

1. Ensure the problem is not related to operation error or external system devices.
2. Keep this owner's manual. We don't need it to repair the unit.
3. Pack the unit in its original packaging including end card and box. This is very important. If you have lost the packaging, please make sure you have packed the unit properly. ICON is not responsible for any damage that occurs due to non-factory packing.
4. Ship to the ICON tech support center or the local return authorization. See our service centers and distributor service points at the link below:

If you are located in US

Send the product to:

North America

Mixware, LLC – U.S. Distributor

3086 W. POST RD.

LAS VEGAS NV 89118

Tel.: (818) 578 4030

Contact: www.mixware.net/help

If you are located in Hong Kong

Send the product to:

ASIA OFFICE:

Unit F, 15/F., Fu Cheung Centre,

No. 5-7 Wong Chuk Yueng Street,

Fotan,

Sha Tin, N.T., Hong Kong.

Tel: (852) 2398 2286

Fax: (852) 2789 3947

Email: info.asia@icon-global.com

If you are located in Europe

Send the product to:

Sound Service

GmbHEuropean

HeadquarterMoriz-Seeler-Straße

3D-12489 Berlin

Telephone: +49 (0)30 707 130-0

Fax: +49 (0)30 707 130-189

E-Mail: info@sound-service.eu

5. For additional update information please visit our website at:
www.iconproaudio.com



天猫官方旗舰店



天猫店iconproaudio旗舰店

抖音号



抖音iCON艾肯

哔哩哔哩



B站iCONProAudio

中国地区用户

微信公众号



微信号iCON-PRO

官方售后QQ



4006311312.114.qq.com

Twitter



www.twitter.com/iconproaudio

Instagram



www.instagram.com/iconproaudio

Facebook



www.facebook.com/iconproaudio

Youtube



www.youtube.com/iconproaudio

Website



www.iconproaudio.com

Support



support.iconproaudio.com

Dashboard



iconproaudio.com/dashboard/

www.iconproaudio.com